

SENSAPHONE® *EXPRESS II*

REMOTE MONITORING SYSTEM



*The Remote Telemetry System
for Environmental and Industrial Monitoring,
Communication, and Control*

SENSAPHONE, INC.

Express II: A comprehensive package of monitoring and control features offering powerful expansion options.

You can customize the Express II system for your specific needs. Add inputs and outputs as your application grows. Easy to install, program and expand.

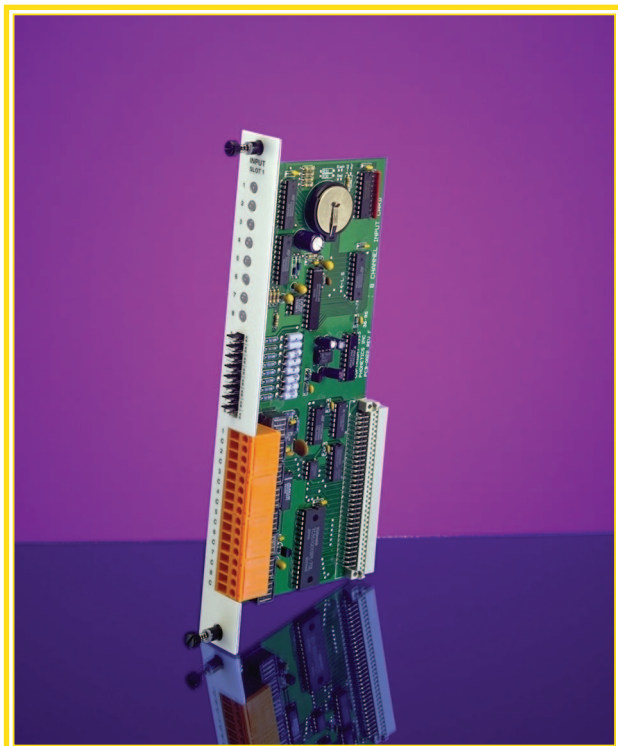
Express II: the first and last monitoring and control system you need to buy.

MONITORING

Express II is equipped with 8 universal inputs, configurable as dry contact, pulse count, 0-5V or 4-20mA analog, or temperature inputs.

Easy-to-install expansion cards let you increase your monitoring capacity by an additional 32 universal input channels. Each input, whether standard-installed or expanded, is fully programmable and complete with a two-color LED to indicate the alarm status locally.

Express II also features built-in AC power monitoring and a built-in microphone for sound level monitoring.



COMMUNICATIONS

The system works over standard phone lines to deliver recorded alarm messages to up to 48 phone numbers.

Call progress detection ensures that crucial alarm calls go through, with no wasted time on busy-signals or unanswered calls.

Alarm-specific dialing and phone list features allow you to customize the dialout process. The digital display indicates current alarm status and phone activity. The standard local serial port allows Express II to print alarm activity to a local printer.

MESSAGING

Digital speech technology allows you to record your voice for both dialout alarm messages and an ID message. When Express II dials out for an alarm, the system recites your personalized voice messages.

This feature is especially useful for service personnel when the system has been expanded with many inputs.

Your creativity and Express II's flexibility enable you to have extensive monitoring capacity without confusion or worry.

All recorded voice messages are stored in nonvolatile memory.

PROGRAMMABILITY

Express II is fully programmable via the local keypad or remotely by touch-tone phone.

Menu-style voice guidance makes programming simple and provides easy access to all parameters, whether you are calling in or using the keypad.

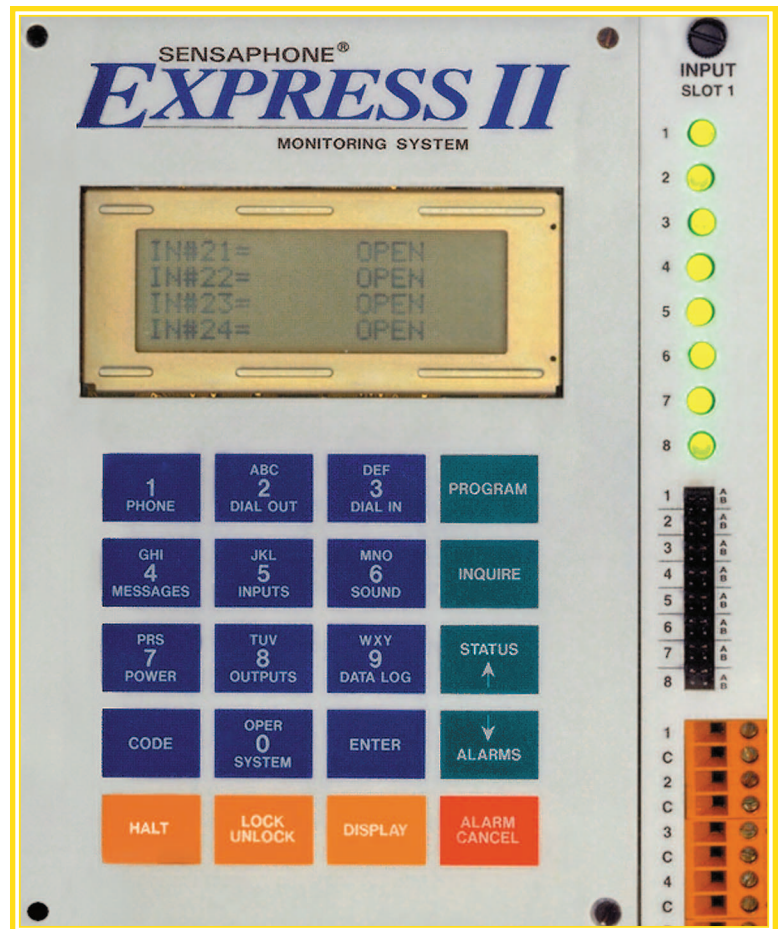
Nonvolatile memory ensures that your programming is not lost during a power failure or storage.

HARDWARE

Express II is equipped with one relay output that can be programmed to control automatically or manually.

Expansion cards allow you to increase Express II's output capacity by up to 32 relay output channels.

Express II is housed in a NEMA-4 fiberglass enclosure with 12-hour rechargeable Gel Cell battery backup.



FEATURES

- ◆ 32 additional channels for input/output expansion
- ◆ 8 standard universally configurable inputs
- ◆ Built-in power failure and sound level monitoring
- ◆ Built-in relay output for manual or automatic switching
- ◆ Digital speech recording allows the user to record custom ID and input messages
- ◆ Complete programming access using the local keypad or via remote touch-tone phone
- ◆ Dials up to 48 user-programmable phone numbers
- ◆ Alarm specific dialing and phone lists allow the user to customize the dialing process
- ◆ Housed in a NEMA-4 fiberglass enclosure with a 12-hour Gel Cell rechargeable battery backup
- ◆ Front panel LEDs indicate input status to on-site personnel

SPECIFICATIONS

GENERAL

Monitoring capacity: 8 universal input channels standard configurable as:

- Normally open dry contact
- Normally closed dry contact
- Pulse counter
- 4-20mA analog with custom look up table
- 0-5 Volt analog with custom look up table

Built-in power failure monitoring

Built-in sound level monitoring (smoke or fire alarm)

Output type: 1 built-in relay, SPST latching 2A 250 VAC

Expansion: 32 additional channels available for input/output expansion

Programming: All parameters can be programmed from the local keypad or any remote touch-tone phone

Speech technology: ADPCM 24 kb/s

Message length: User selectable 5, 7 or 11 seconds per input channel

Message types: 1 recorded ID message

1 recorded alarm message for each input channel

Telephone numbers: Total of 48 phone numbers with 32 digits each

Allows alarm specific dialing

Multiple phone lists for day/night/weekend

Dialing format: Touch-tone, pulse, or auto-detect

Phone connector: RJ11C

Activity log: Built in RS232 port

Can automatically print alarm activity to a local printer

Local indications: Built in LCD display to show alarm dialing status

Dual-color LED indication for each input channel

ELECTRICAL

Power requirements: 120 VAC, 60 Watts Max

Internal battery backup: 12 hour Gel Cell with built-in charger

ENVIRONMENTAL

Operating temperatures: 32-120 degrees F

Operating humidity: 0-90%, non-condensing

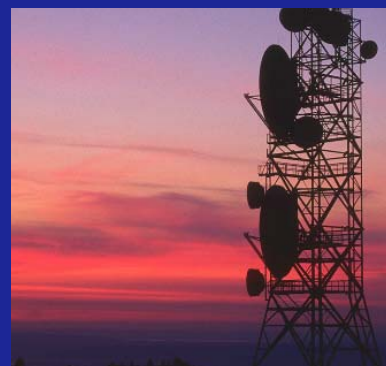
Storage temperatures: 0-130 degrees F

PHYSICAL

Dimensions: 14.4" x 12.4" x 7.3"

Weight: 15 lbs.

Enclosure: NEMA-4 fiberglass with latched window cover



SENSAPHONE, INC.