

SENSAPHONE® IMS-4000 Infrastructure Monitoring System

MONITOR WHAT YOU WANT



DELIVERED THE WAY YOU WANT



THE SENSAPHONE IMS-4000 MONITORS AND REPORTS THE INFORMATION THAT YOU NEED TO KNOW:

Get critical environmental status information, such as temperature trouble, humidity problems, power outages, unauthorized access, and more, sent directly to you.

Receive instant notification through a voice telephone call, an alpha-pager message, an e-mail message, an SNMP trap, or a fax report.

Monitor important IP devices in single rooms, in buildings, across the city, even across the country.

Control power to your equipment.

Scale your needs to match your growing infrastructure. Monitor one room or an entire network. Add up to 32 networked IMS devices.

Introducing the Sensaphone® IMS-4000, a stand-alone infrastructure monitoring system with an integrated voice and modem, an internal UPS, flash-disk storage, and a web server, in a simple-to-install 1U rack-mountable package. From the wide array of its plug-and-play monitoring devices to its sophisticated software, the IMS-4000 is a complete, flexible, integrated system.

With the IMS-4000 you can sleep at night, because it's on guard . . . *watching your world.*

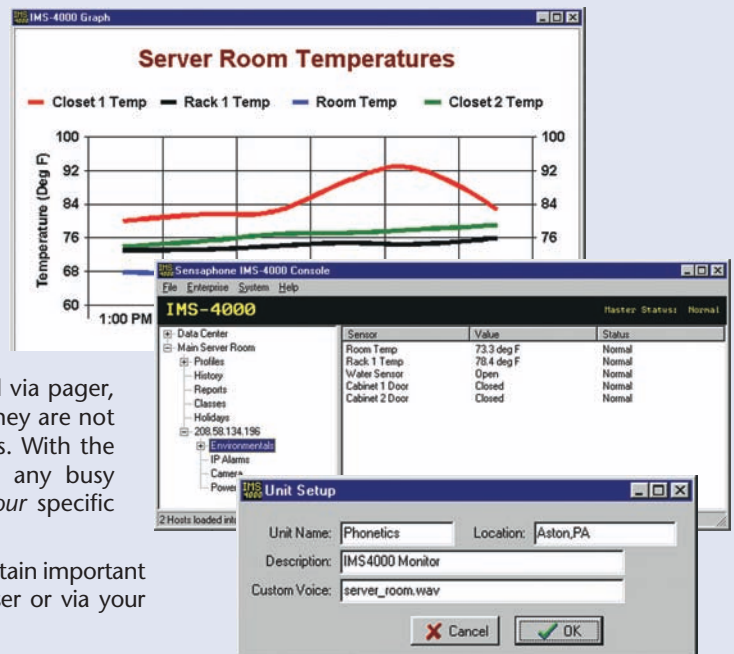
The IMS Console: Your gateway to enterprise-wide monitoring capabilities.

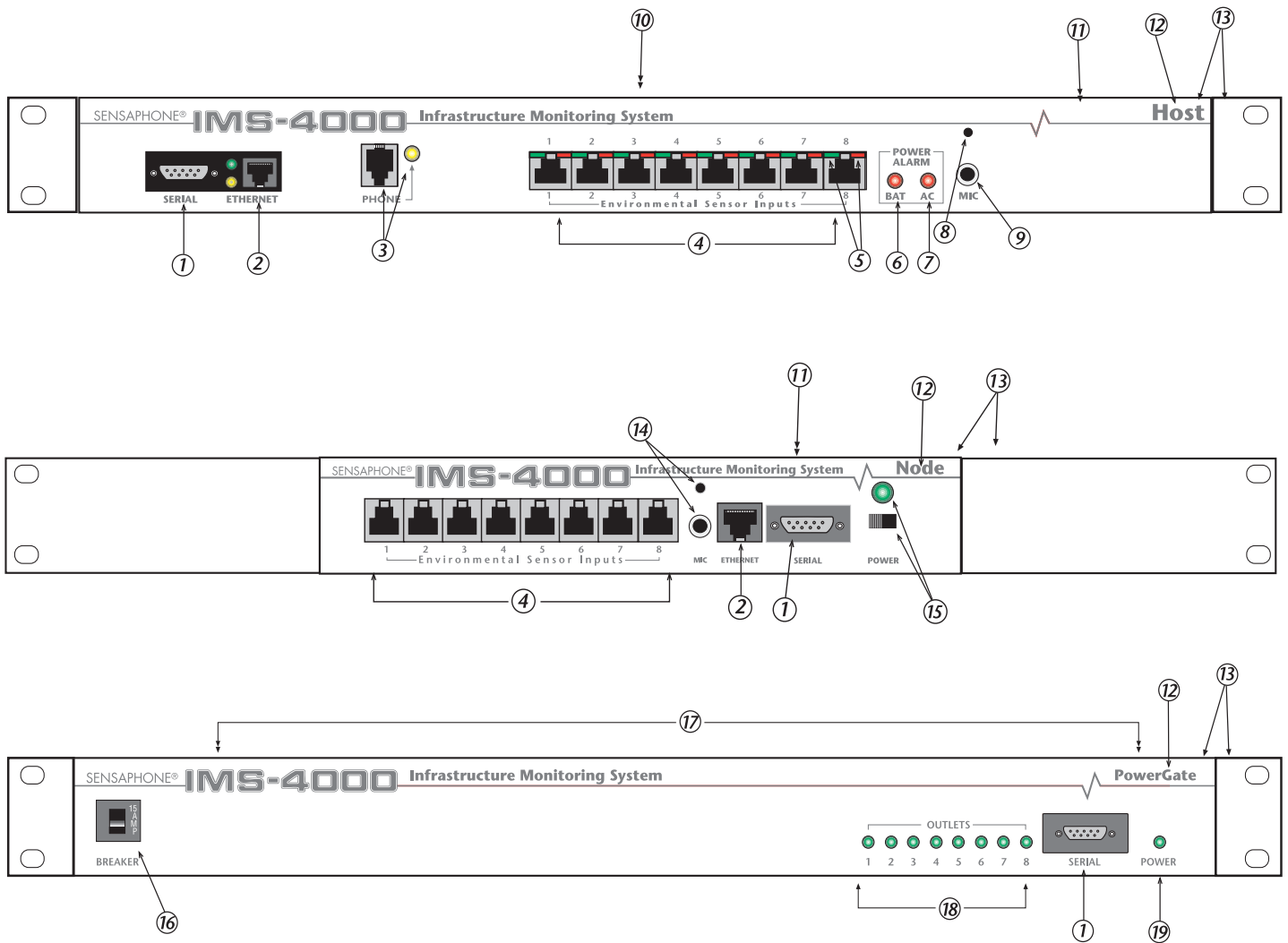
From this Windows™ interface, you can configure the system, review historical events, determine the status of all monitored network devices, and create and maintain alarm schedules. The IMS Console software is included with each IMS-4000 and is a multi-user network-based application. Whether you are accessing the system from your LAN or from a workstation at home via the remote dial-in access port, you utilize the same easy-to-use interface.

Following detailed options you have specified to the IMS, environmental alarms and network events are sent to you immediately. Through User Profiles, events are sent to you only when you have decided you need to know about them—by day, shift, holiday, or time zone.

A user may wish to be called at home first, then contacted via pager, and finally on a mobile telephone. Users can specify that they are not to be called during certain time periods or on certain days. With the IMS-4000 scheduler, users can match alarm delivery to any busy schedule. Alarms and events are configured to match *your* specific schedules.

With the embedded Web Server, you can quickly and easily obtain important status information and historical data through a web browser or via your Web-enabled wireless device.





1. DB9 Serial Port. Used for initial setup of the IMS-4000 unit and to connect to/from the IMS PowerGate outlet device.
2. Ethernet Port connects your IMS-4000 to your network.
3. Telephone jack connects your IMS-4000 Host to the telephone network. The yellow Phone Status LED shows if the phone line interface is in use.
4. Eight environmental inputs support all of the IMS sensors with standard RJ45 connectors.
5. Red and green lights show the real-time alarm status of the environmental inputs.
6. Battery Alarm indicator shows the status of the internal battery backup system.
7. AC Power Alarm indicator shows the status of the AC power line into which the IMS is plugged.
8. Internal microphone for sound level alarming and remote listen-in.
9. Microphone jack for attachment of the IMS Remote Mic for sound level alarming and remote listen-in.
10. The IMS-4000 includes a standard PC-type grounded power cord.
11. Internal UPS battery backup holds operation for several hours after utility power has been interrupted.
12. Identifies your IMS-4000 unit as the main Host, Node, or PowerGate unit.
13. Rack-mountable 1U high, 19" mounting configuration. The IMS-4000 can also be mounted on a wall with the IMS wall-mounted kit purchased separately.
14. Built-in mic and external microphone jack in Node unit are for detecting sound level alarms.
15. Power On/Off switch and Green LED power indicator on the Node unit.
16. 15 AMP breaker on the PowerGate unit.
17. Eight Power Outlets on the back of the PowerGate Unit.
18. Eight LEDs, indicating the on/off status of each outlet.
19. LED indicates that the PowerGate is plugged in and receiving power.



