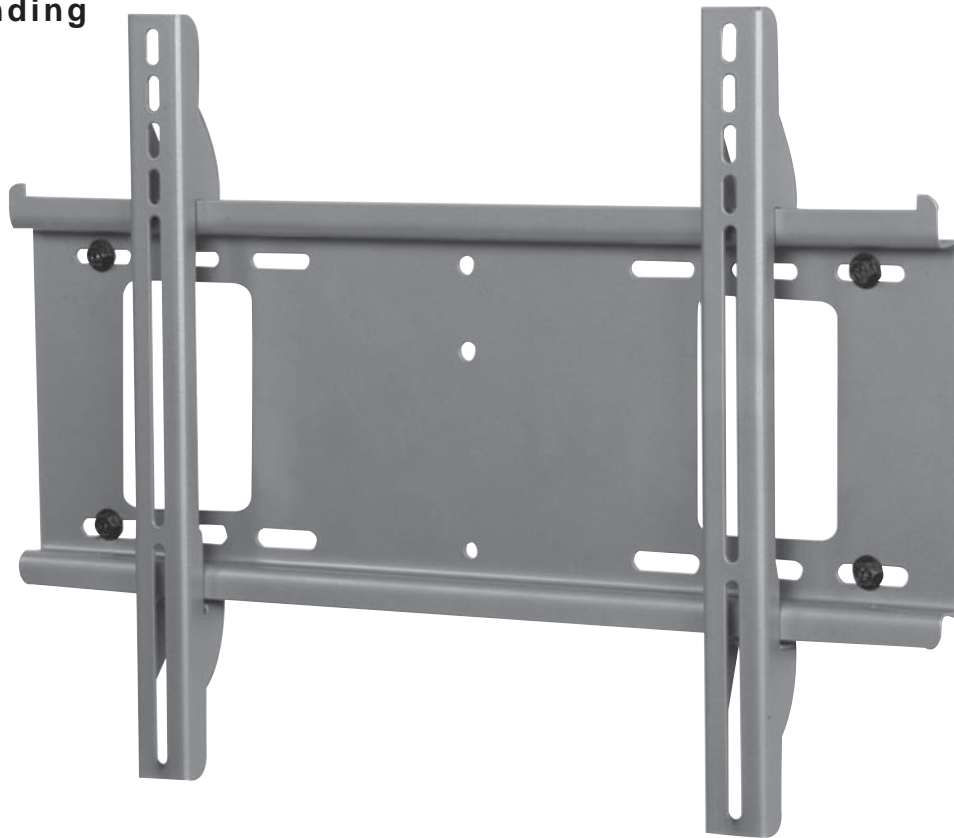


SmartMount™

Universal Flat Wall Mount

For 23" to 46" LCD Flat Panel Screens

Patent Pending



Ultra-slim design keeps flat panels tight to the wall, giving boardrooms, digital signage or lobbies that pro look. This SmartMount comes with everything you need for a quick and easy install: flat panels engage with an audible click, simple to align universal brackets and an open-design wall plate allows easy access to junction boxes and cable management. Plus, the Peerless Sorted-For-You™ fastener pack eliminates guesswork during installation by making screen attachment hardware easy to find.

- Simple hook-on design makes install a snap
- Horizontal screen adjustment up to 6"
- Junction box access ports on wall plate
- Integrated security options available

SF640, SF640-S,
SF640P, SF640P-S



SmartMount™

Universal Flat Wall Mount

For 23" to 46" LCD Flat Panel Screens

Model Numbers

SF640, SF640-S (Security models)
SF640P, SF640P-S (Standard models)

Product Specifications

- Fits screens with mounting hole patterns up to 17.25" W and 12.94" H
- Ultra-slim design holds screen only 1.18" from the wall
- Easy-glide bracket design ensures screen is securely attached to wall plate
- Mounts to one or two wood studs, concrete, cinder block or metal studs (accessory required)
- Horizontal screen adjustment up to 6"
- Comes with Peerless' Sorted-For-You™ fastener pack with all necessary screen attachment hardware
- UL listed
- Comes in black or silver

FEATURES

DIMENSIONS (W x H x D) 19.25" x 13.75" x 1.18" (48.25 x 34.75 x 2.99 cm)

LOAD CAPACITY 150 lb (68.03 kg)

PRODUCT WEIGHT 4.93 lb (2.23 kg)

FINISH Scratch Resistant Fused Epoxy

AVAILABLE COLORS Black: SF640, SF640P
Silver: SF640-S, SF640P-S

ACCESSORY

- Metal Stud Fastener Kit (ACC415)
- Video Conferencing (ACC309)
- Accessory Shelves (PM600, PM610)

PATENT Patent Pending

Package Specifications

PACKAGE CONTENTS Wall plate, universal brackets and mounting hardware

UNITS IN PACKAGE 1

PACKAGE SIZE (L x W x H) 20.13" x 8.63" x 3.88" (51.1 x 21.9 x 9.9 cm)

PACKAGE SHIP WEIGHT 5.6 lb (2.23 kg)

PACKAGE UPC CODE

SF640:	735029235651
SF640P:	735029235675
SF640-S:	735029235668
SF640P-S:	735029235682

WARRANTY Limited 5-year



Side View



Peerless Industries, Inc.

LIT-0106 rev2