

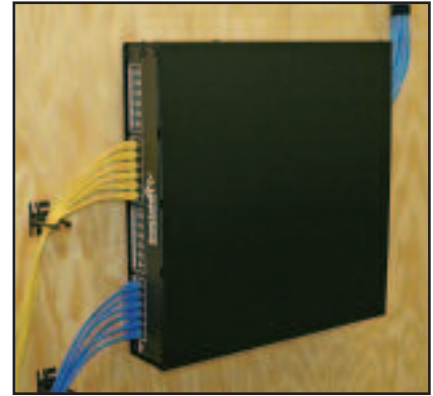
Wall Mount Products

2RMU and 4RMU Wall Rack Mount Boxes

STOCK COLOR: Black

FEATURES:

- 19" EIA 310-D compliant mounting
- #10-32 threaded mounting holes
- 3 position adjustable rails
- Keyed wall mounting holes (16" centers) for left, right, or vertical equipment orientation
- Removable cover
- All steel construction
- Durable black texture powder coat finish
- Vented



2U and 4U Wall Rack Mount Boxes

PART NO.	DESCRIPTION
WR2	Dimensions: 4"H, 19.75"W, 21.63"D Weight capacity: 50 lbs. Rack spaces: 2 RMU Shipping weight: 19 lbs.
WR4	Dimensions: 7.5"H, 19.75"W, 21.63"D Weight capacity: 75 lbs. Rack spaces: 4 RMU Shipping weight: 21 lbs.

Wall Mount Swing Racks

STOCK COLOR: Black

- More vertical rack space
- 19" EIA 310-D compliant with 12-24 threaded holes, package of screws included
- "Stay-open" hinge pins
- Provisions for optional cable management cinch straps
- 100 lbs. weight capacity
- 180° positive stop
- Minimal assembly required
- Listed to UL60950-1



WALL MOUNT Swing Racks

PART NO.	DESCRIPTION
GL24SR	Dimensions: 23.75"H, 20.75"W, 18.00"D Weight capacity: 100 lbs. Rack spaces: 12 RMU Shipping weight: 34 lbs.
GL36SR	Dimensions: 36.00"H, 20.75"W, 18.00"D Weight capacity: 100 lbs. Rack spaces: 19 RMU Shipping weight: 44 lbs.
GL48SR	Dimensions: 48.763"H, 20.562"W, 18.00"D Weight capacity: 100 lbs. Rack spaces: 26 RMU Shipping weight: 54 lbs.