

Enclosures

LanPro™

MaxPro™

Summit™

IT Enclosure Offering

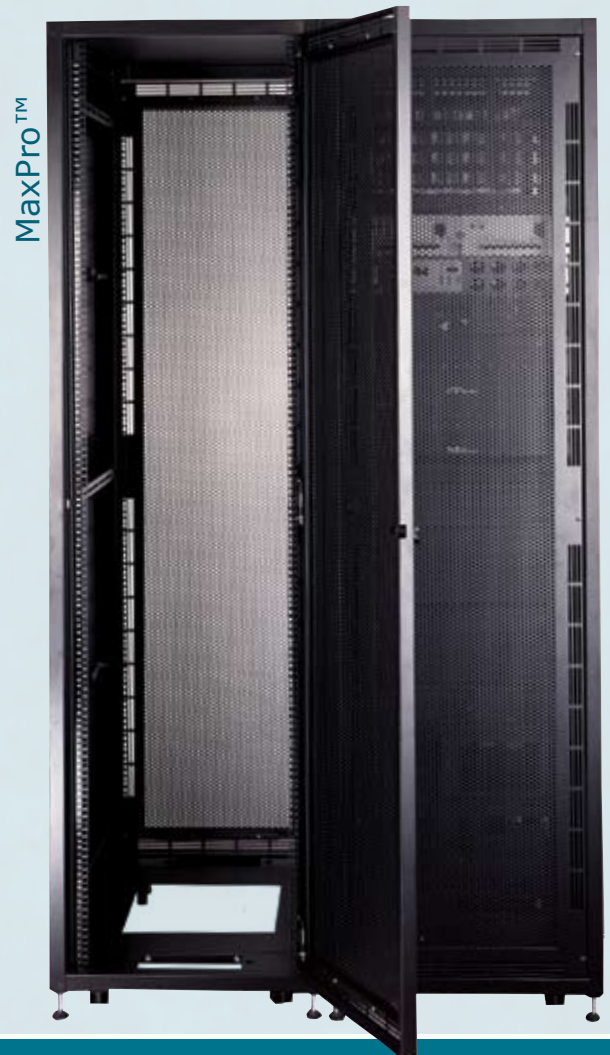
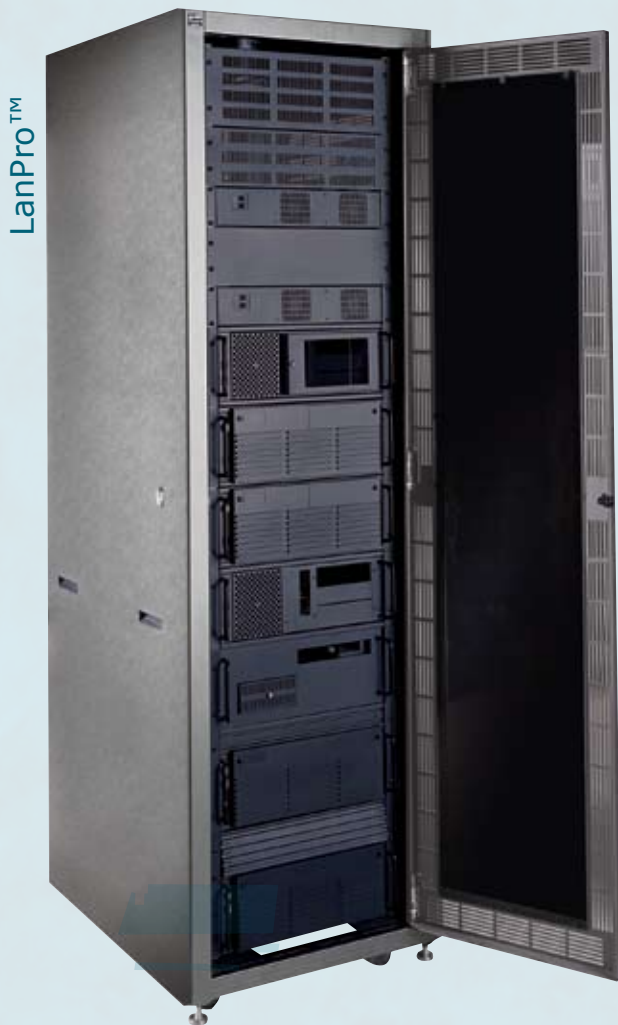
Enclosure Overview

EDP offers three distinct server and IT hardware enclosure lines to address various levels of security, equipment access and advanced cable management requirements. All models are available with multiple door options to meet airflow requirements in compliance with hardware manufacturers' equipment.

LanPro - One of EDP's first enclosure product lines, LanPro serves as the platform for individual rack-mount cabinet models, oversized double-wide cabinet solutions, co-location configurations and heavy-duty seismic-rated enclosure demands. LanPro is also offered to the US government on the EDP-GSA schedule.

MaxPro - The MaxPro line was introduced as a complete enclosure line with options for door styles, access panels and improved cable management access within a run of enclosures. MaxPro offers an innovative, tool-less ganging mechanism as well.

Summit - Our most sophisticated enclosure platform serves as a facility standard for several Fortune 100 businesses who demand the best cabinet design in terms of cable access, integrated cable management raceways and durability. The Summit cabinet includes innovative full-swing access doors on all four sides of the frame for effortless interior access and high-capacity integrated vertical and upper raceways that exceed cable management offered by standard cabinets and 4-post racks.



Technology and Engineering Enhancements

Technology Complements
for Your Technology



Safety Options



Comprehensive Cable
Management



Extensive Standard
Features



Extensive Cable
Management Solutions



Quality Enclosure
Infrastructure



Numbered Equipment
Mounting Rails



Summit™



Table of Contents:

- 2** - Enclosure Overview
- 3** - Technology and Engineering Enhancements
- 4** - LanPro™
- 5** - MaxPro™
- 6** - Summit™
- 7** - Technology Management Products

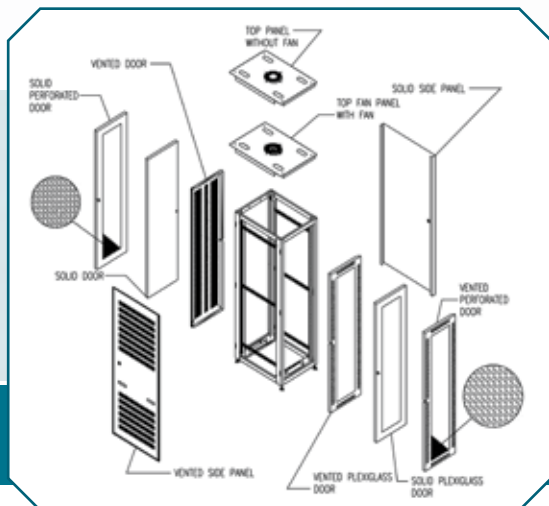
LanPro™

Features include:

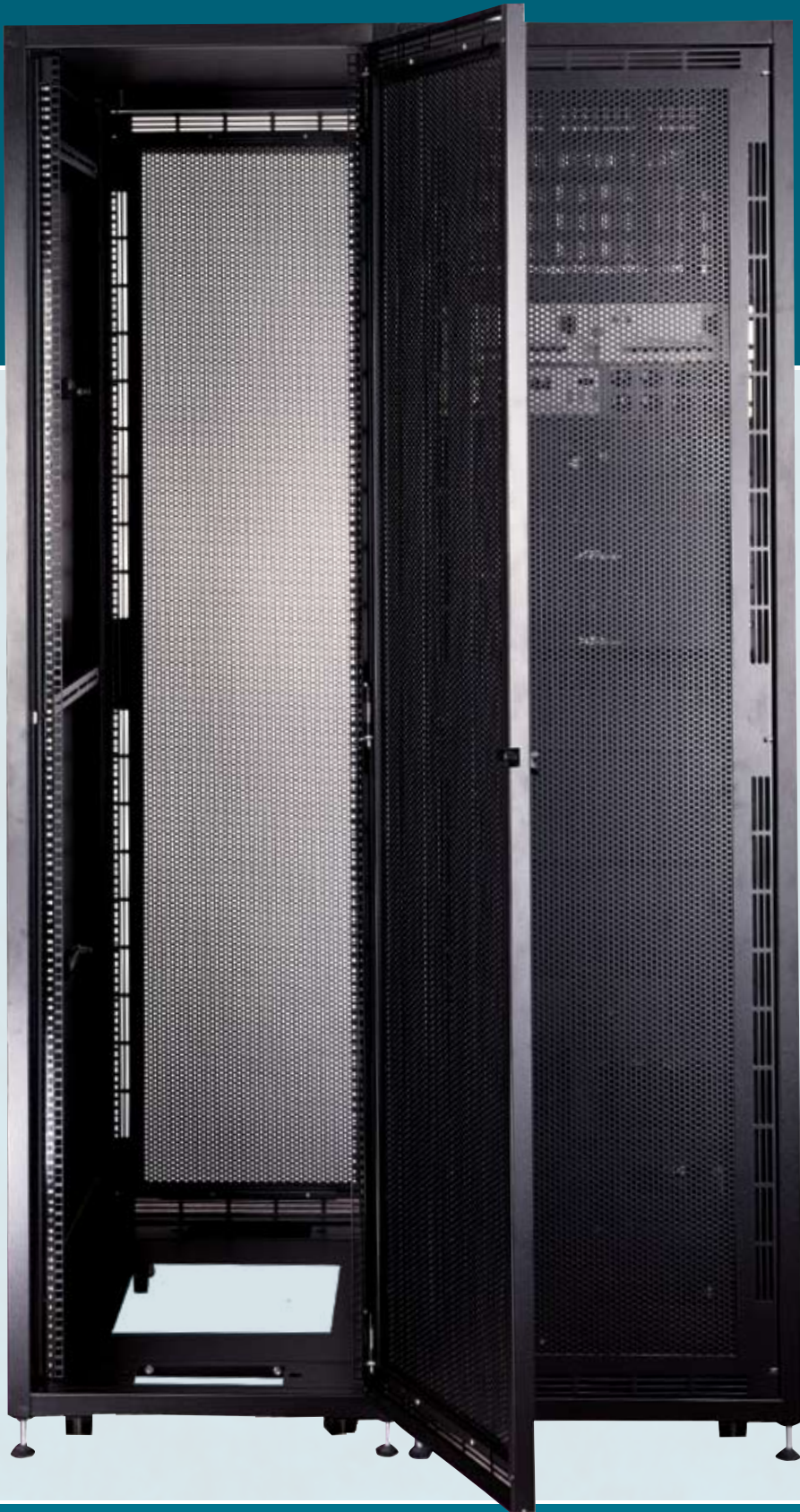
- An 84" frame with 45RU of mounting space vs. an industry average of 44RU
- Numbered rails for easier equipment mounting
- Multiple height, width and depth options
- Multi-vendor capability allows for up to (3) three different style manufacturing rails to co-exist in the same enclosure
- Zone 4 offering (seismic rated)
- GSA Contract offering
- 2000 lb. frame weight capacity
- Interchangeable solid or vented locking side panels for easy access locking
- Interchangeable perforated, plexiglass or solid doors

Options include:

- Multiple lock options
- Heavy-duty caster kit
- Multiple rail options
- Available in 24, 29 and 48-inch widths
- Top panel with or without fan
- Anti-tip stabilizer
- Multiple cooling and power options
- Fixed or roll-out shelves
- Adjustable fan kit option eliminates "hot spots"
- Tool-less equipment shelf is easily mounted and repositioned
- Horizontal and vertical cable management devices

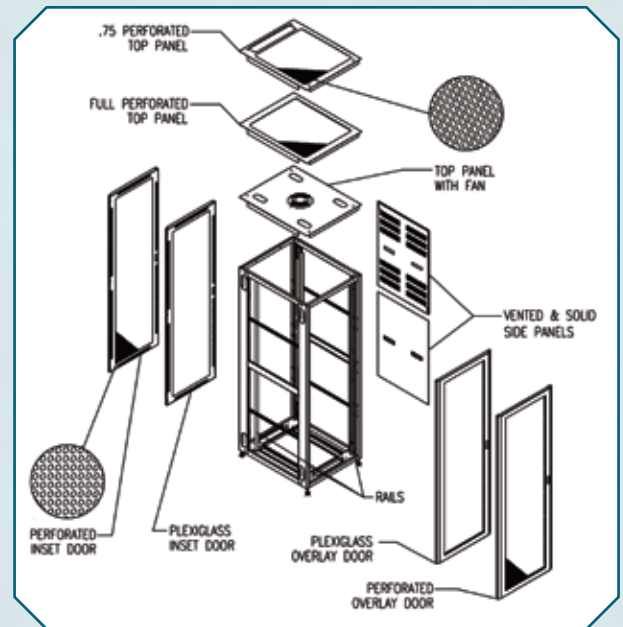


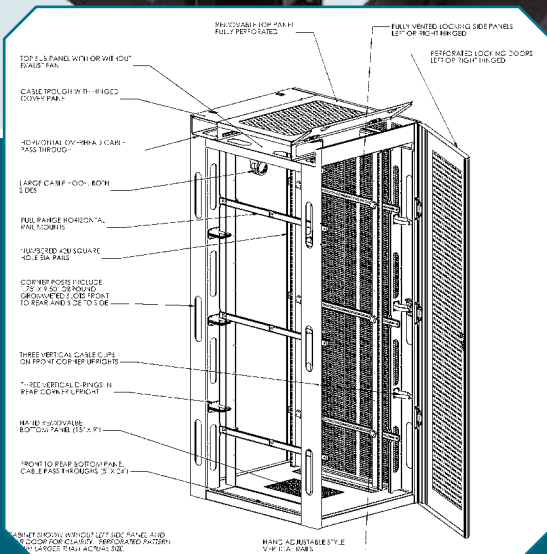
MaxPro™



Features include:

- An 84" frame with 46RU of mounting space vs. an industry average of 44RU
- Numbered rails for easier equipment mounting
- Patented "Quick Ganging" handles allow adjacent cabinets to be ganged together in seconds without the use of nuts, bolts or tools
- Multiple height, width and depth options
- Multi-vendor capability allows for up to (3) three different style manufacturing rails to co-exist in the same enclosure
- Cable pass through built into frame for additional cable management
- 2000 lb. frame weight capacity
- Interchangeable solid or vented locking, and half-height side panels for easy access
- Interchangeable perforated or plexiglass doors





Features include:

- Rigid steel construction
- Industry-leading cable management areas
- Masked grounding point
- Top sub panel with or without exhaust fan
- Intergrated cable roof trough with hinged cover panel
- Horizontal overhead cable pass-through
- Large cable hooks, both sides
- Full range horizontal rail mounts
- Numbered 42U square hole EIA rails
- Corner posts include 1.75" x 9.50" grommeted slots, front-to-rear and side-to-side
- Three vertical cable clips on front corner uprights
- Three vertical D-rings in rear corner uprights
- Hand removable bottom panel (15" x 9")
- Front-to-rear bottom panel with cable pass-through (5" x 24")
- Hand adjustable vertical rails
- Removable top panel - fully perforated
- Fully vented locking side panels (left or right hinged)
- Perforated locking doors (left or right hinged)

Technology Products

EDP is an authorized master reseller for industry-leading technology products and accessories to complement our core products. We offer in-house technical assistance to properly specify solutions that are compatible with our enclosure and command console systems to complete the integration of your end users' technology. Here is a summary of our most popular lines:



Avocent®

We feature the full line of desktop and rack-mount KVM solutions including the digital series & KVM extenders, analog switches, serial switches and power management devices.



Geist

EDP offers the full line of Geist power distribution products to meet the performance requirements of hardware and networking gear common to enclosures and command furniture. Geist's comprehensive offering includes multiple horizontal and vertical power models with features such as remote power management and environmental monitoring.



Koldlok®

We offer the innovative Koldlok series of raised-floor grommets designed to increase the reliability and performance of Data Centers while inexpensively recovering lost cooling capacity and significantly reducing energy costs.



RM Station from EDP

EDP offers a propriety rack-mount LCD monitor station that consumes only 1U of vertical panel space when closed. Available with a 15" or 17" screen, keyboard and mouse.

