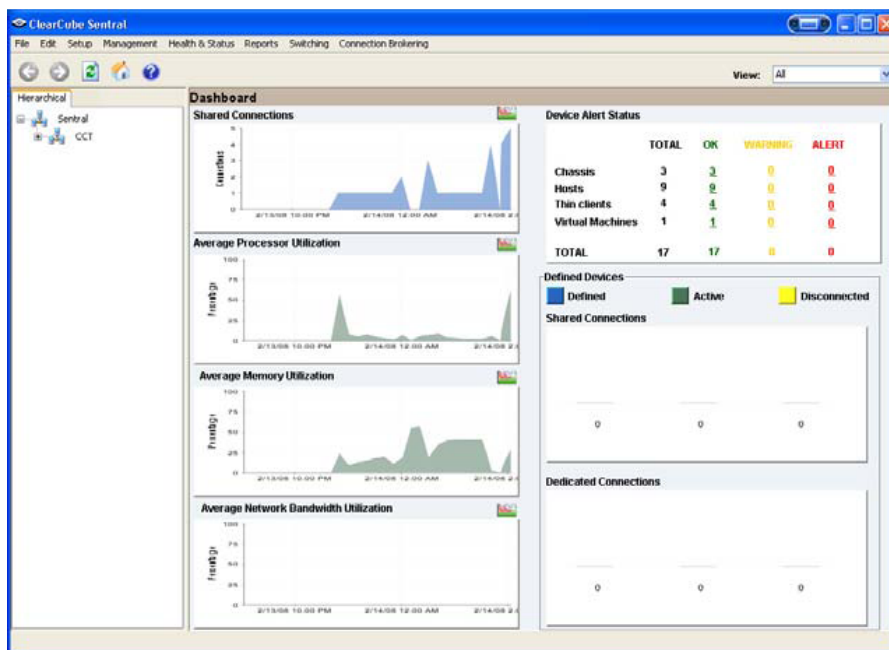


# ClearCube® Sentral™

for Centralized Desktop Computing Solutions

## Centralized Management for Centralized Computing

Sentral is the most comprehensive management software for centralized desktop computing, including virtual desktop deployments. Sentral allows practically any client device to connect with any back-end computing resource for a high quality end-to-end computing experience. Sentral is the only virtual desktop management software to give IT administrators a single interface to monitor and control their entire centralized infrastructure, including local and remote computing assets. Built on the industry's most robust brokering technology, Sentral manages physical and virtual computing environments. From PC blades to virtual desktops to servers in a VDI environment – Sentral ensures asset security, manageability and availability.



Sentral Dashboard

## Manage Everything

Sentral enables customers to use any back end hardware and user access device for centralized computing. Sentral manages a wide variety of user access devices, provides virtual machine pooling, supports Web browsers as virtual desktop clients, and provides system management capabilities including health and asset monitoring. The Sentral dashboard keeps administrators informed about the status of the enterprise environment by monitoring and displaying information about desktops, virtual machines and servers, PC blades and thin clients. Sentral Console provides a comprehensive management framework for centralized computing infrastructures. Sentral is highly scalable, enabling easy integration with complex, heterogeneous enterprise environments.

## Key Features

- Connection brokering
- Dynamic resource allocation
- Virtual desktop management
- Virtual machine pooling
- Automatic resource discovery
- Active health monitoring
- System management tools
- Host switching & sparing
- Scalability for large enterprises
- Multi-vendor virtualization support
- VMware® ESX management
- Microsoft® Virtual Server, Hyper-V and Xen® support
- Easy installation & configuration

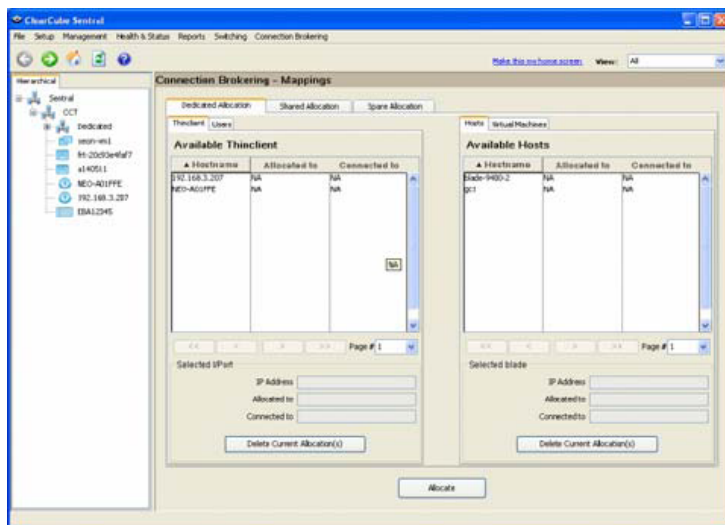
## Benefits

- Complete solution for physical & virtual environments
- Improved manageability and control
- Remotely manage and allocate computing resources
- Lower IT management costs
- Data security for VDI environments
- Flexibility to interoperate with heterogeneous environments
- Improved resource utilization
- Accommodates different user needs and user types

## DATA SHEET

### Sentral Console

- Manage entire virtual desktop environments
- Manage thousands of nodes from a single console
- Delegate administrative access levels and authority
- Aggregate device health/utilization and session status into a single dashboard view
- Audit and create detailed reports about management activities and user sessions
- Group devices and users by type, location, or other criteria through custom views
- Create custom alerts that trigger console notifications, emails, or messages to third-party applications
- Remotely control hosts and access devices
- Manage IPMI and vPro™ enabled systems with support for console redirection and out-of-band management



### Connection Brokering

- Manages policy-based connection requests
- Enables user- or device-based mappings to blades, PCs or virtual machines
- Enables Active Directory integration for user-based mappings
- Supports multiple databases, including Microsoft SQL and MySQL®
- Supports a variety of connection types:
  - RDP for off-the-shelf thin clients, including ClearCube I84xx-series
  - PC-over-IP™ thin clients, including ClearCube I94xx-series
  - TDX protocol-based thin clients

### Virtualization Module

- Supports multiple virtualization technologies
- Pools VMs to manage resource allocation
- Manages VM power states
- Manages VMware ESX interaction with corresponding VMs
- Supports Microsoft Hyper-V, Xen, as well as Microsoft Virtual Server and VMware Server

With Sentral, users can log in from anywhere and be directed to centralized hosts or virtual desktop sessions. This means users can log in from home, from hotels, or from any machine with an Internet connection, and securely access a host or blade located in a corporate data center. Sentral connects users anywhere to their centralized computing resources.

### Requirements

#### Sentral Server

- Windows XP Professional, Windows Vista Business Edition, or Windows 2000, 2003, or 2008 Server
- MS SQL or MySQL
- Internet Information Server (WWW)\* or Apache Tomcat

#### Managed Nodes

- Windows XP Professional, Windows 2000 Professional, or Windows Vista Business Edition

#### Managed Clients

- Windows XP Professional, Windows Vista Business Edition, Windows XP Embedded, or NeoLinux™

#### Browser-based Remote Desktop Access

- Internet Explorer™ or Mozilla® Firefox®

#### Virtualization Software Support

- VMware ESX, VMware Server
- Microsoft Virtual Server, Hyper-V

### Ordering Information

You can purchase Sentral as part of an integrated ClearCube solution or as a stand-alone application (12 months of maintenance and support included, extended M&S available).

\*Microsoft IIS functionality requires the installation of ServletExec 3<sup>rd</sup> party software available for purchase from ClearCube.

Contact ClearCube Sales for more information.