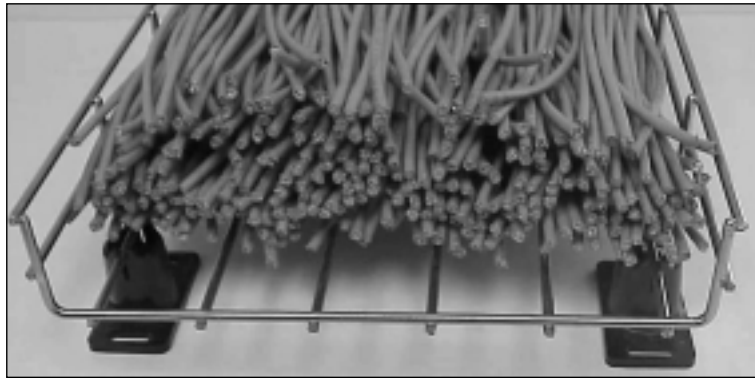


INFORMATION LOADING

Wire Basket System Cable Fill & Load Rating

The National Electrical Code allows for 50% fill of ventilated cable tray for control or signal wiring (Article 318-9(b)). This rule requires that all the individual cable cross-sectional areas added up may not exceed one half the cable tray area. The cable tray area is equal to the width times the load depth.

In actual practice with Category 5 cables, however, the cable tray becomes completely full in reaching the “50% cable fill”. See the picture below. The tray is completely full, but the sum of the cable areas is only 50% of the tray area, due to the empty spaces between the cables.



NEC 50% Cross Sectional Area Illustration

This being the case, there is a practical limit to the amount of cables that can be installed in the tray, based on the trays' width and load depth. The following chart shows the approximate cable weight that can be installed without exceeding the 50% fill rule and the tested load capacity:

TRAY SERIES	TRAY SIZE	MAX. # CABLES*	APPROX. MAX. CABLE WEIGHT **LBS/FT	TESTED LOAD CAPACITY***LBS/FT			
				5'	6'	7'	8'
WB202	(2x2)	48	1.2				
WB204	(2x4)	93	2.4	56	38	30	23
WB206	(2x6)	150	3.9				
WB208	(2x8)	208	5.4	64	49	33	25
WB212	(2x12)	314	8.2	85	62	48	37
WB218	(2x18)	481	12.5	89	64	52	40
WB224	(2x24)	650	16.9	93	66	55	42
WB408	(4x8)	390	10.1	93	66	47	36
WB412	(4x12)	606	15.8	110	90	54	42
WB418	(4x18)	930	24.2	116	80	55	42
WB424	(4x24)	1255	32.6	132	83	55	42

* This chart was based on 50% fill of 4 UTP Category 5 cable (O.D. = .21" .026 lbs/ft).

** This is not a maximum load rating for the tray, rather a practical guide to the amount of cable weight that can realistically be installed.

*** Tested in accordance with NEMA VE-1/CSA E22.2 No. 126.1
Individual test reports available upon request.
Safety Factor: 1.5

Installation Guide

NEMA VE-2

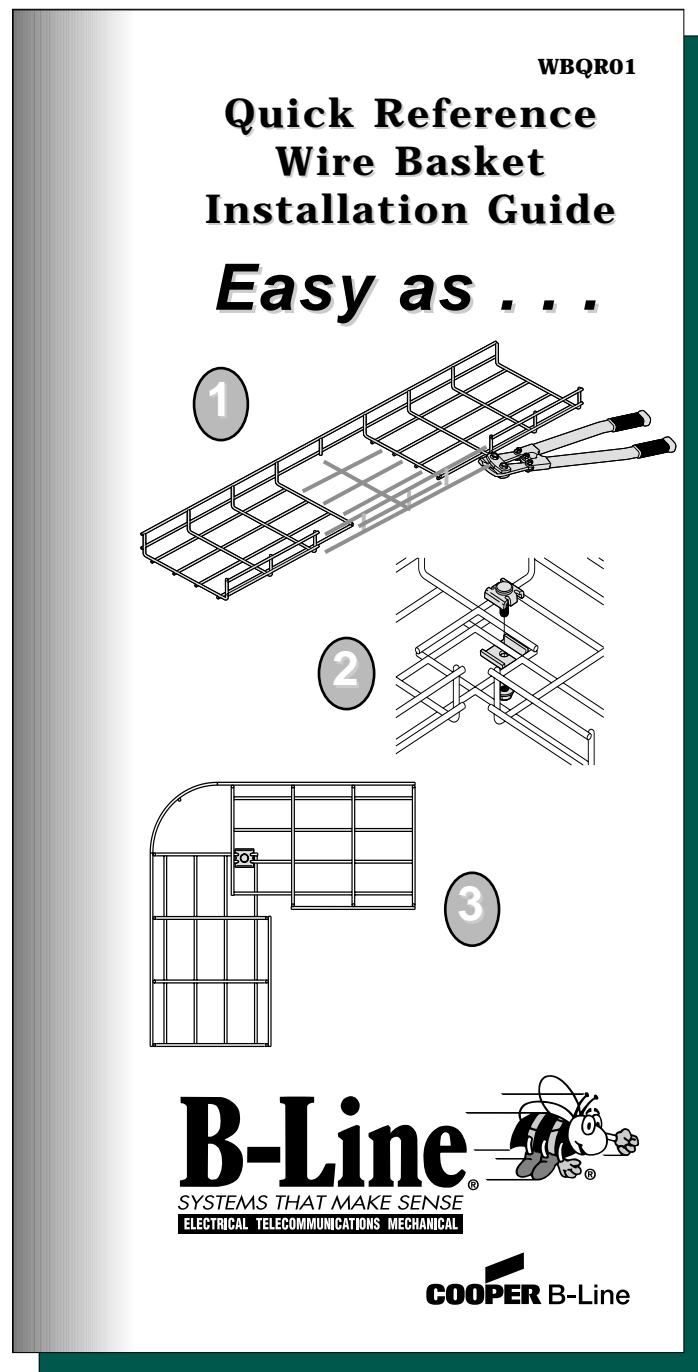
Wire mesh cable tray systems have been added to the NEMA VE-2, Cable Tray installation guidelines. The NEMA VE-2 is available for free download from www.cabletrays.com.

WB-02

See pages 32 through 37 of this catalog for cut patterns to create fittings and clamping requirements.

WBQR01

Cooper B-Line packs a quantity of WBQR01 Wire Basket Quick Reference Installation Guide, a pocket sized guide for the installer with each shipment.



WBQR01

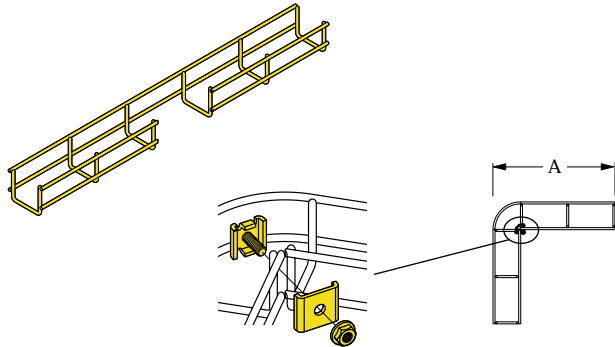
INSTALLATION INFORMATION

HORIZONTAL BEND ASSEMBLY GUIDE

90° Short Radius Bends

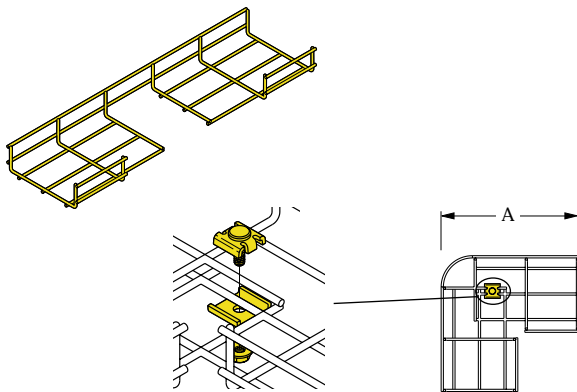
To field cut and form a bend from a Wire Basket straight section, cut side and bottom wires (deburr if necessary). Form and assemble using recommended Connector Assemblies as illustrated below.

2" (50 mm) Wide



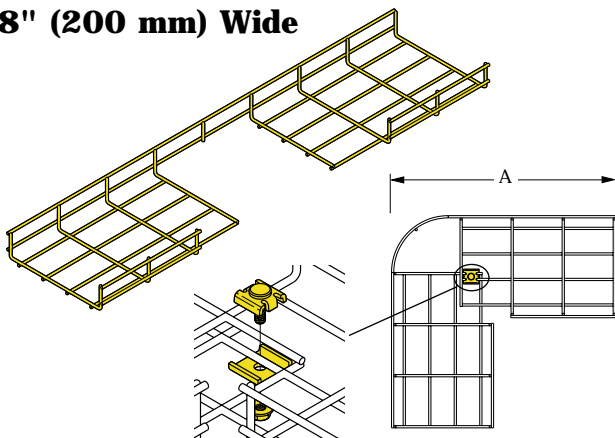
WIDTH		A		CONNECTOR ASSEMBLY WB4CA
in.	mm	in.	mm	
2	50	10.5	265	1

4" and 6" (100 and 150 mm) Wide



WIDTH		A		CONNECTOR ASSEMBLY WB4CA
in.	mm	in.	mm	
4	100	10.5	265	1
6	150	14.5	370	1

8" (200 mm) Wide



WIDTH		A		CONNECTOR ASSEMBLY WB4CA
in.	mm	in.	mm	
8	200	17.3	440	1

NOTE: WB200 Series Wire Basket shown, WB400 Series has an additional side wire.

INSTALLATION INFORMATION

HORIZONTAL BEND ASSEMBLY GUIDE

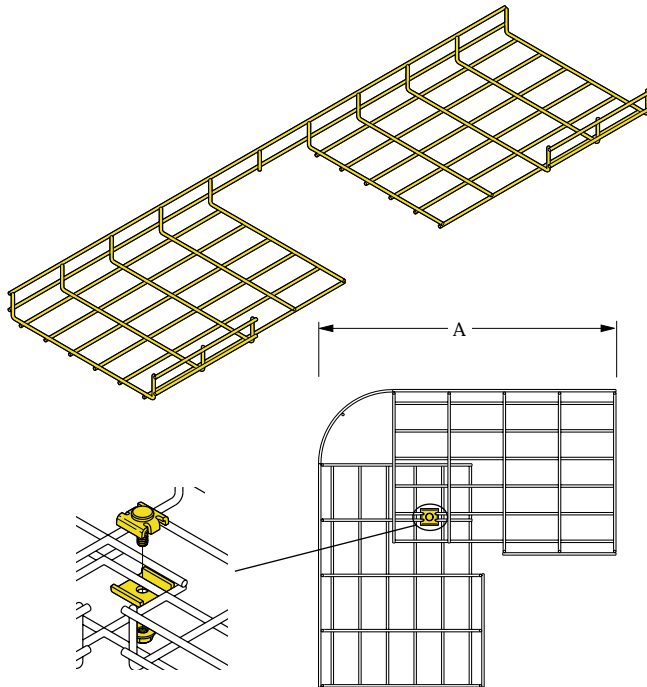
To field cut and form a bend from a Wire Basket straight section, cut side and bottom wires (debur if necessary). Form and assemble using recommended Connector Assemblies as illustrated below.

90° Short Radius Bends

WIDTH		A		CONNECTOR ASSEMBLY WB4CA
in.	mm	in.	mm	
12	300	21	530	1

12" (300 mm) Wide

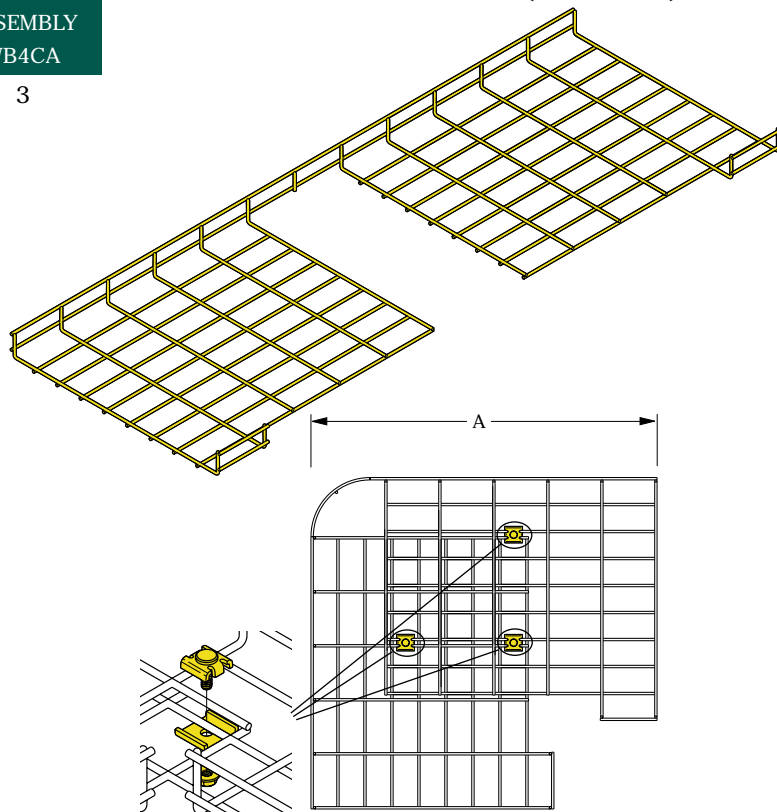
NOTE: WB200 Series Wire Basket shown, WB400 Series has an additional side wire.



WIDTH		A		CONNECTOR ASSEMBLY WB4CA
in.	mm	in.	mm	
18	450	25	640	3

18" (450 mm) Wide

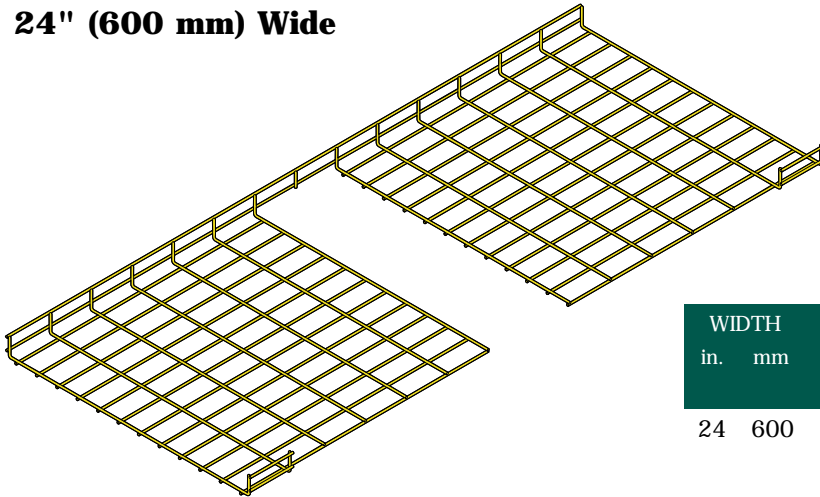
NOTE: WB200 Series Wire Basket shown, WB400 Series has an additional side wire.



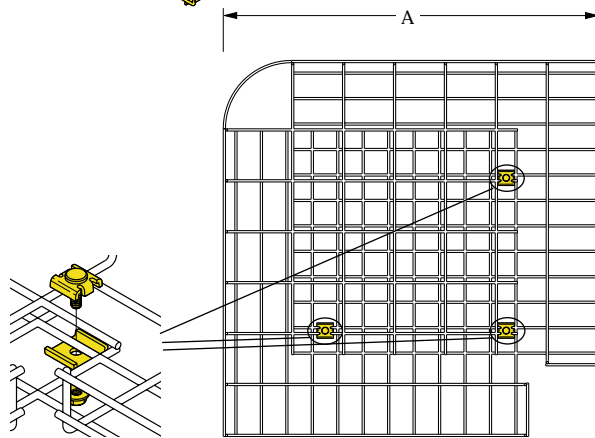
INSTALLATION INFORMATION

HORIZONTAL BEND ASSEMBLY GUIDE

24" (600 mm) Wide



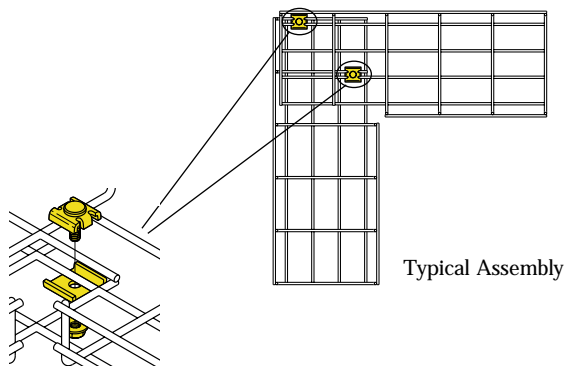
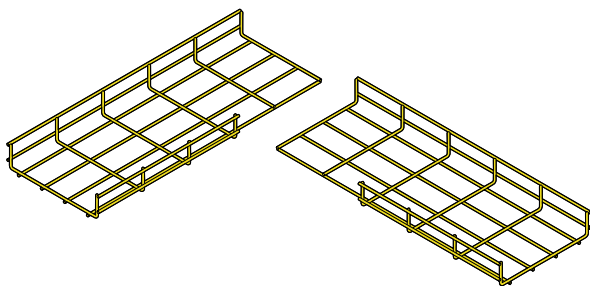
WIDTH		A		CONNECTOR ASSEMBLY
in.	mm	in.	mm	WB4CA
24	600	29	735	3



NOTE: WB200 Series Wire Basket shown, WB400 Series has an additional side wire.

90° Bends Assembled From Two Straight Sections

Two sections of Wire Basket can be used to assemble a 90° horizontal bend. Cut side wires as illustrated. Information in the chart below shows the number of segments (side wires) to cut and remove. Assemble using Connector Assemblies as illustrated.



WIDTH		REMOVE SEGMENTS	CONNECTOR ASSEMBLY
in.	mm		WB4CA
4	100	1	2
6	150	2	2
8	200	2	2
12	300	3	2
18	450	4	3
24	600	6	3

NOTE: WB200 Series Wire Basket shown, WB400 Series has an additional side wire.

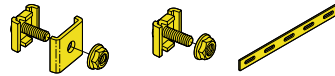
INSTALLATION INFORMATION

HORIZONTAL BEND AND REDUCER ASSEMBLY GUIDE

90° Long Radius Bends

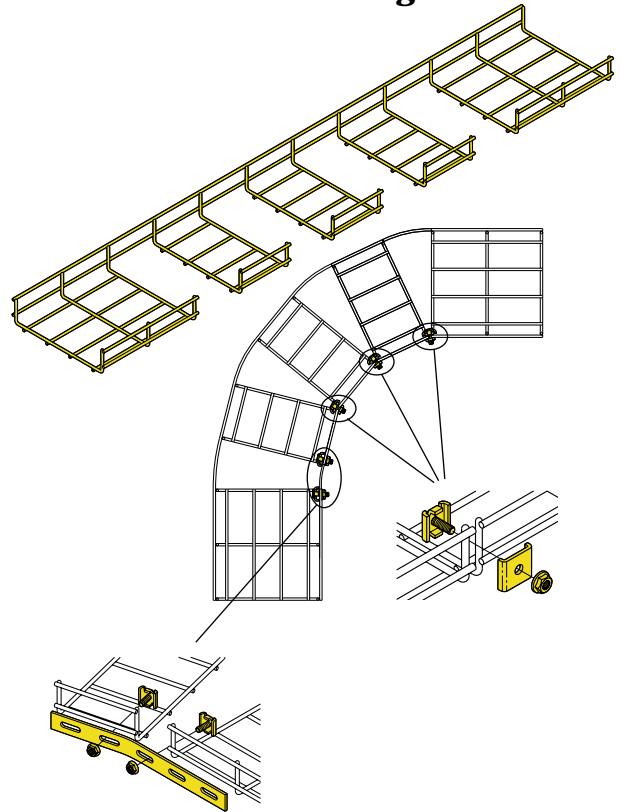
To field cut and form a bend from a Wire Basket System straight section, cut side and bottom wires (deburr if necessary). Form and assemble using recommended Splice Bars, Connector and Clamp Assemblies as illustrated below.

WIDTH		RADIUS		REMOVE SEGMENTS	CONNECTOR ASSEMBLY	CLAMP ASSEMBLY	SPLICE BAR
in.	mm	in.	mm		WB4CA	WB4CP	WB10SB



4	100	9.5	24	2	1	2	1
6	150	10.7	27	3	2	2	1
8	200	15	38	4	3	2	1
12	300	22	56	6	5	2	1
18	450	32	81	8	7	2	1
24	600	42	106	11	10	2	1

NOTE: WB200 Series Wire Basket shown, WB400 Series has an additional side wire.

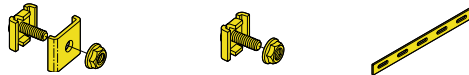


Use splice bar for exact angle adjustment.

Reducers

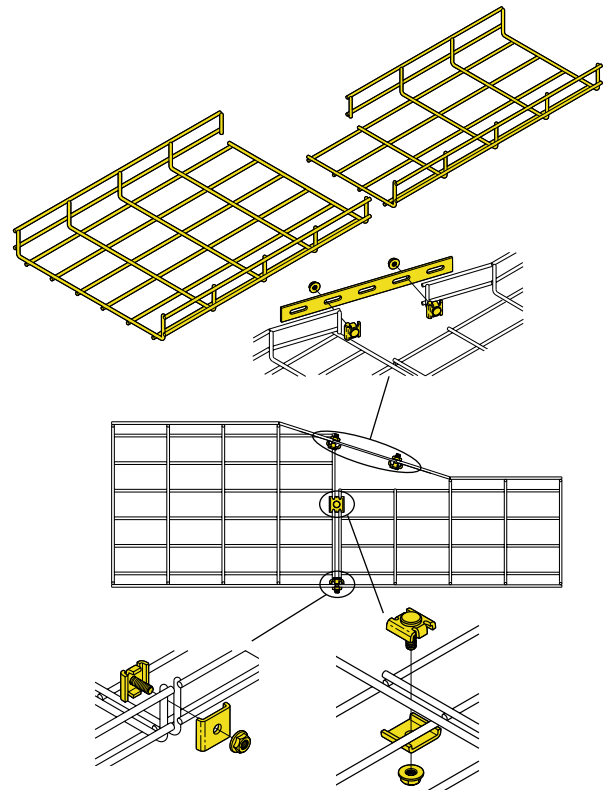
To connect two unequal widths of Wire Basket Systems, simply cut and assemble two runway sections using recommended Splice Bars, Connector and Clamp Assemblies as illustrated.

LARGE WIDTH		CONNECTOR ASSEMBLY	CLAMP ASSEMBLY	SPLICE BAR
in.	mm	WB4CA	WB4CP	WB10SB



4	100	1	2	1
6	150	2	2	1
8	200	2	2	1
12	300	3	2	1
18	450	3	2	1
24	600	3	2	1

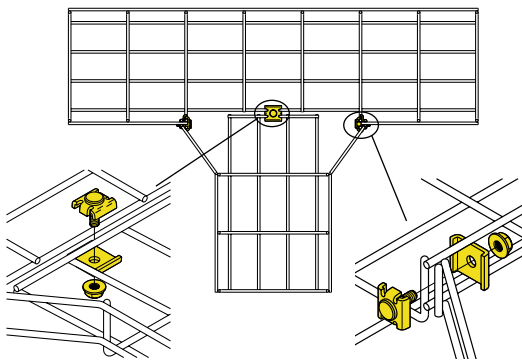
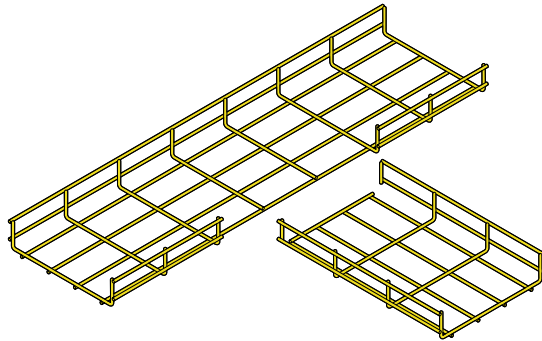
NOTE: WB200 Series Wire Basket shown, WB400 Series has an additional side wire.



INSTALLATION INFORMATION

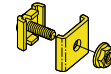
HORIZONTAL TEE AND CROSS ASSEMBLY GUIDE

Horizontal Tees



To produce a horizontal tee from Wire Basket straight sections, simply cut, form and assemble as illustrated. To produce a horizontal cross, duplicate the tee and assemble on the opposing side of the tee junction. Double the quantity of Connector Assemblies for a horizontal cross.

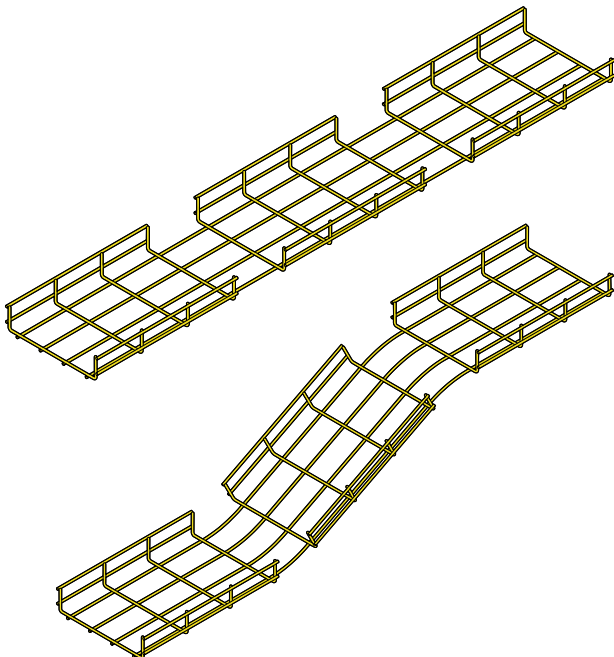
WIDTH		CONNECTOR ASSEMBLY WB4CA
in.	mm	
2	50	2
4	100	2
6	150	2
8	200	3
12	300	4
18	450	4
24	600	4



NOTE: WB200 Series Wire Basket shown, WB400 Series has an additional side wire.

VERTICAL BEND ASSEMBLY GUIDE

Vertical Inside and Outside Bends



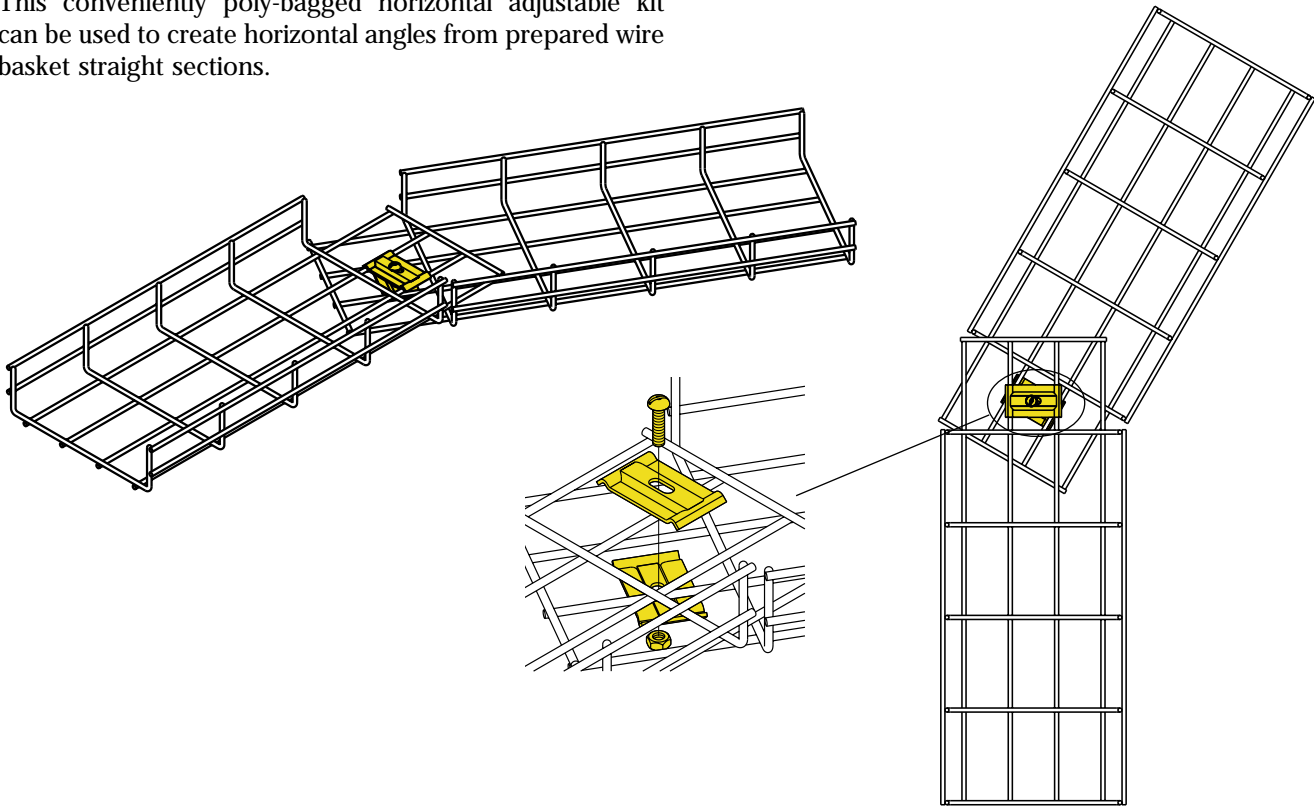
To produce vertical inside and outside bends from Wire Basket straight sections, simply cut and remove side wires as illustrated. Form to desired radius to change elevation. No assembly or splicing components required.

NOTE: WB200 Series Wire Basket shown, WB400 Series has an additional side wire.

INSTALLATION INFORMATION HORIZONTAL BEND AND REDUCER ASSEMBLY GUIDE

WB4HAK - Horizontal Adjustable Kit

This conveniently poly-bagged horizontal adjustable kit can be used to create horizontal angles from prepared wire basket straight sections.

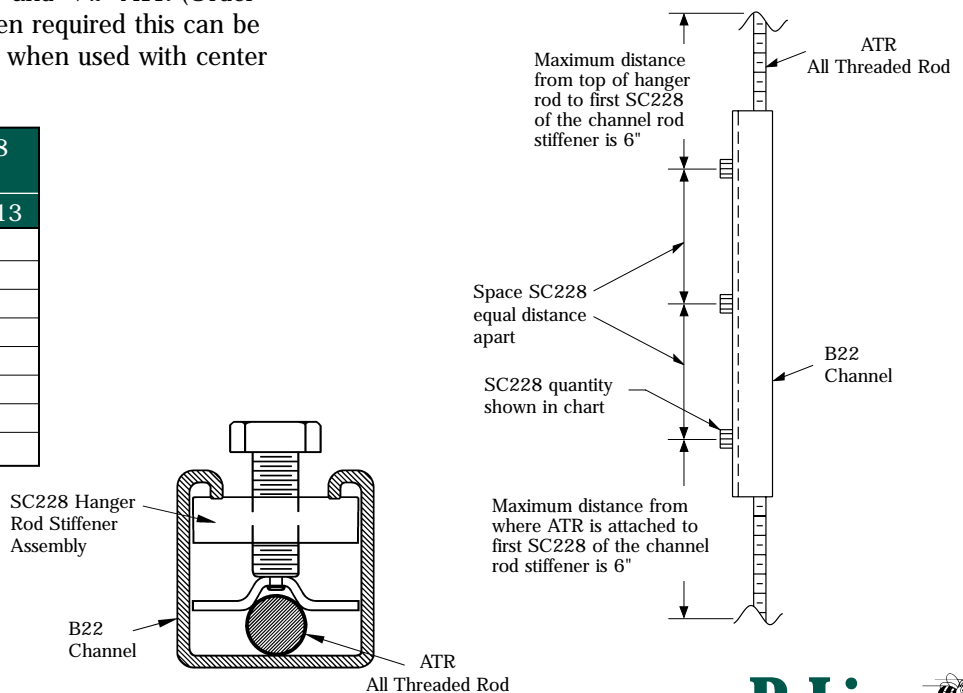


ROD STIFFENER

SC228 Hanger Rod Stiffener Assembly

Threaded rod stiffener for 3/8" and 1/2" ATR (Order B22 Channel Separately). When required this can be used to stiffen all threaded rod when used with center hanging brackets.

Length of Rod	Number of SC228 Required	
	3/8" -16	1/2" - 13
24	2	2
30	3	2
36	3	3
48	4	3
60	5	4
72	6	5
84	7	5
96	7	6

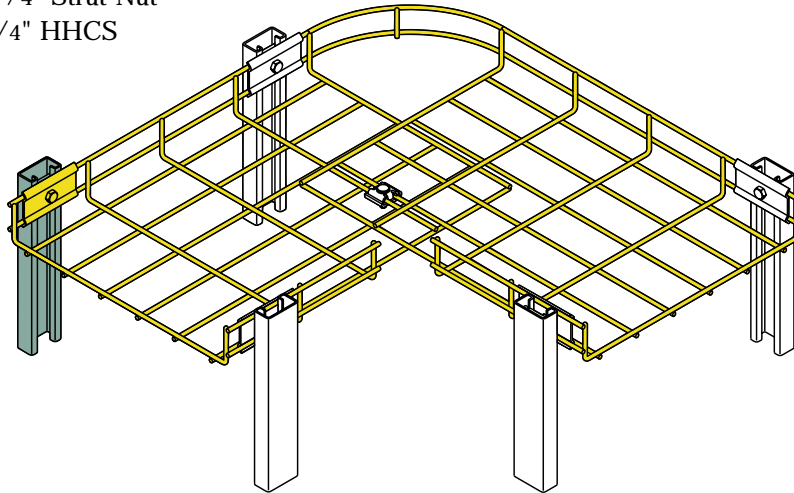


INSTALLATION INFORMATION

Floor Stand Support Options

Per support bill of material for one leg:

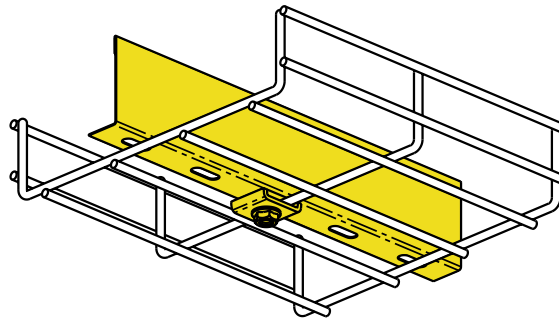
- 1 - cut length of B54 Channel
- 1 - WB4SP
- 1 - FN224 1/4" Strut Nut
- 1 - 1/4" x 3/4" HHCS



Barrier Installation For Wire Basket System

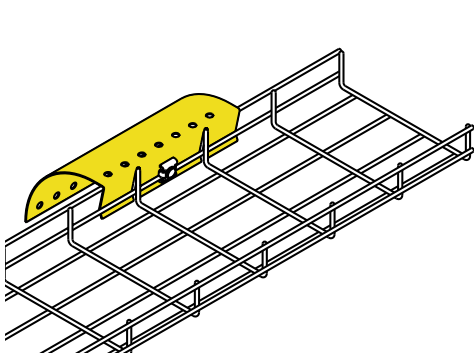
Barrier Kit includes:

- 1 - Barrier*
- 3 - 1/4" - 20 x 1" SRHM Screw
- 3 - WB4PL
- 3 - SFHN 1/4" Hex Nut

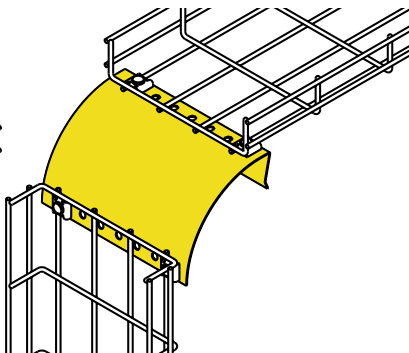


*Barrier - WB2B-3M for WB200 Series
- WB4B-3M for WB400 Series

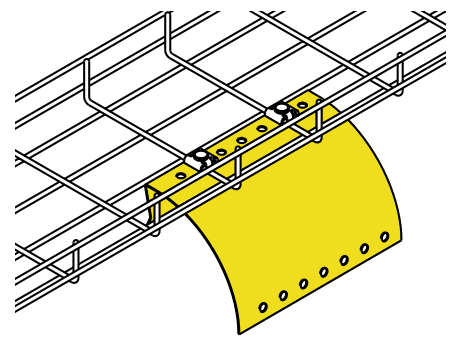
Drop-Out Options



Requires 1-WB4CP
(not included)



Requires 4-WB4CP'S
(not included)



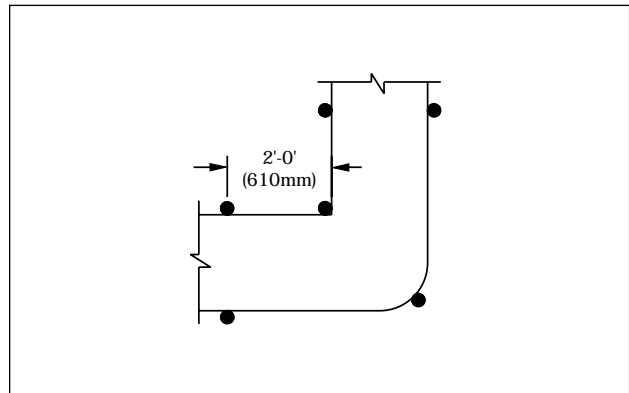
Requires 2-WB4CP'S
(not included)

Recommended Support Locations for Wire Basket Fabricated Fittings

The following are recommended support diagrams to serve as guidelines for installing wire basket cable support systems in the field. The information is intended to provide the installer some practical assistance when estimating the amounts of supports and to help in identifying support locations for various field conditions for the installer. It does not, however, cover every situation that may arise when installing the product. It may be possible to install narrow trays with lighter loads and fewer supports. Wider trays with heavier loading, trays with long radii, or those with multiple side wires cut may require additional support to avoid unwanted deflection.

Horizontal Elbow Support

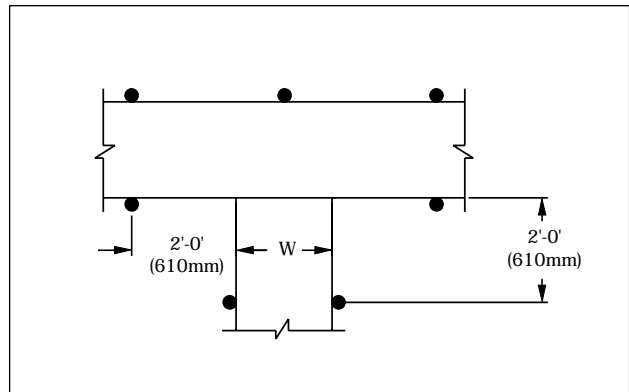
Inside corner supports are not required on 90° short radius bends.



Horizontal Elbow Support

Horizontal Tee Support

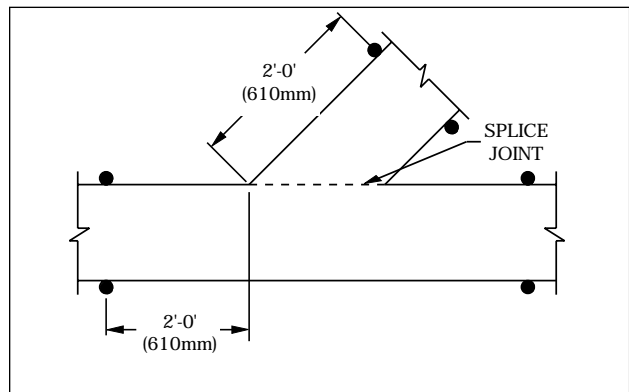
On 24" wide items, one support may be placed at the mid-point of the back span as illustrated.



Horizontal Tee Support

Horizontal Wye Support

On 24" wide items, recommended distance is 1 ft. 6 in. (457mm) from splice connection.

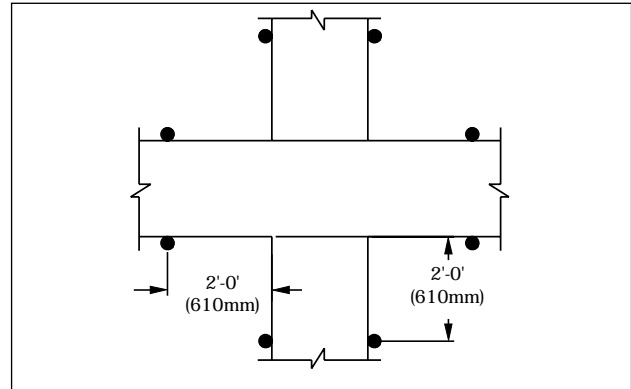


Horizontal Wye Support

INSTALLATION INFORMATION

Horizontal Cross Support

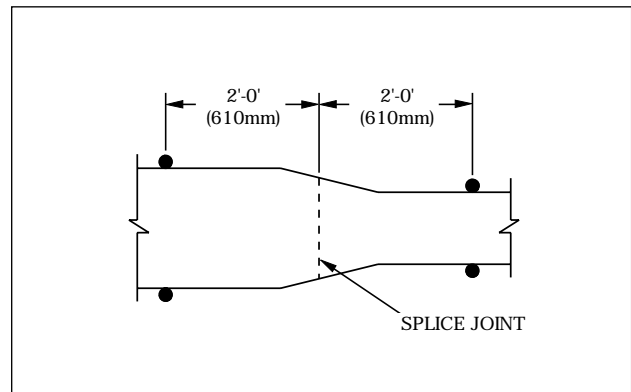
On 24" wide items, recommended distance is 1 ft. 6 in. (457mm) from splice connection.



Horizontal Cross Support

Reducer Support

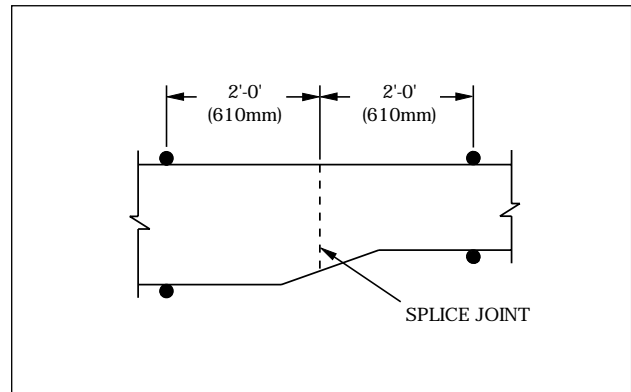
Place reducer supports within 2 ft. (610mm) of each splice connection.



Reducer Support

Reducer Support

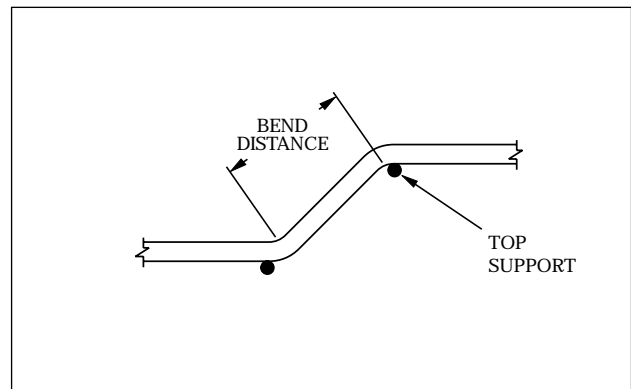
Place reducer supports within 2 ft. (610mm) of each splice connection.



Reducer Support

Vertical Elbows

Support vertical elbows at top support location. Bend distances of 4 ft. (1219mm) and over should be supported at each end as illustrated.



Vertical Elbows

SECTION 16114**WIRE BASKET CABLE SUPPORT SYSTEM****PART I - GENERAL****1.01 SECTION INCLUDES**

- A. The work under this section consists of furnishing all necessary labor, supervision, materials, equipment, tests and services to install complete wire basket systems as shown on the drawings.
- B. Wire basket systems are defined to include; but are not limited to, straight sections of continuous wire mesh, field formed horizontal and vertical bends, tees, drop outs, supports and accessories.

1.02 REFERENCES

- A. ANSI/NFPA 70 - National Electrical Code
- B. ASTM B633 - Specification for Electrodeposited Coatings of Zinc on Iron and Steel
- C. ASTM A653 - Specification for Steel Sheet, Zinc-Coated (Galvanized) by the Hot Dip Process
- D. ASTM A123 - Specification for Zinc (Hot Galvanized) Coatings on Iron and Steel
- E. ASTM A510 - Specification for General Requirements for Wire Rods and Coarse Round Wire, Carbon Steel

1.03 DRAWINGS

- A. The drawings, which constitute a part of these specifications, indicate the general route of the wire basket systems. Data presented on these drawings is as accurate as preliminary surveys and planning can determine until final equipment selection is made. Accuracy is not guaranteed and field verification of all dimensions, routing, etc., is required.
- B. Specifications and drawings are for assistance and guidance, but exact routing, locations, distances and levels will be governed by actual field conditions. Contractor is directed to make field surveys as part of his work prior to submitting system layout drawings.

1.04 SUBMITTALS

- A. Submittal drawings: Submit drawings of wire basket system and accessories including connector assemblies, clamp assemblies, brackets, splice plates, splice bars, grounding clamps and hold down plates showing accurately scaled components.
- B. Product Data: Submit manufacturer's data on wire basket system including; but not limited to, types, materials, finishes and inside depths.

1.05 QUALITY ASSURANCE

- A. NEC Compliance: Comply with NEC, as applicable to construction and installation of cable tray and channel cable tray systems (Article 318, NEC).
- B. NFPA Compliance: Comply with NFPA 70B, "Recommended Practice for Electrical Equipment Maintenance" pertaining to installation of cable tray systems.

APPENDIX

1.06 DELIVERY, STORAGE AND HANDLING

- A. Deliver wire basket systems and components carefully; to avoid breakage, bending and scoring finishes. Do not install damaged equipment.
- B. Store wire basket systems and accessories in original cartons and in clean dry space; protect from weather and construction traffic.

PART 2 - PRODUCTS

2.01 ACCEPTABLE MANUFACTURERS

- A. Manufacturer: Subject to compliance with these specifications, wire basket runway systems to be installed shall be as manufactured by B-Line Systems, Inc. [or engineer-approved equal].

2.02 WIRE BASKET SYSTEM SECTIONS AND COMPONENTS

- A. General: Provide wire basket of types and sizes indicated; with connector assemblies, clamp assemblies, connector plates, splice plates and splice bars. Construct units with rounded edges and smooth surfaces, in compliance with applicable standards and with the following additional construction features.
- B. Materials and Finishes: Material and finish specifications for each wire basket runway type are as follows:
 1. Yellow Zinc Dichromate: Straight sections shall be made from steel meeting the minimum mechanical properties of ASTM A510 and shall be electro-plated yellow zinc dichromate in accordance with ASTM B633 SC2.
 2. Hot-Dip Galvanized After Fabrication: Straight sections shall be made from steel meeting the minimum mechanical properties of ASTM A510 and shall be coated after the wire basket system has been fabricated in accordance with ASTM A123 (CSA Type 1). All hot-dip galvanized after fabrication sections must be returned to the point of manufacture after coating for inspection and removal of all icicles and excess zinc. Failure to do so may result in damage to cables and/or injury to installers.
 3. Stainless Steel: Straight sections and accessories shall be made from AISI Type 304 Stainless Steel.
 4. Paint: Straight sections may be epoxy painted Computer White, Flat Black or Telco Gray over Yellow Zinc Dichromate.
 5. Pre-Galvanized Zinc: Wall brackets and other pre-galvanized accessories shall be coated with zinc in accordance with ASTM A653.
 6. Electro-Galvanized Zinc: Support accessories and miscellaneous threaded hardware shall be coated in accordance with ASTM B633 SC3. All threaded components shall be coated in accordance with ASTM B633 SC1.

2.03 TYPE OF WIRE BASKET CABLE SUPPORT SYSTEM

- A. All straight section longitudinal wires shall be straight (with no bends).

- B.** Wire basket system shall be made of high strength steel wires and formed into a standard 2 inch by 4 inch wire mesh pattern with intersecting wires welded together. All wire ends along systems' sides (flanges) shall be rounded during manufacturing for safety of cables and installers.
- C.** Wire basket sizes shall have 1 inch usable loading depth by 4 or 12 inches wide, 2 inch usable loading depth by 2, 4, 6, 8, 12, 18 or 24 inches wide or 4 inch usable loading depth by 8, 12, 18 or 24 inches wide. Straight sections shall be furnished in standard 118 inch lengths.
- D.** All fittings shall be field formed as needed.
- E.** All splicing assemblies shall be the bolted type using serrated flange locknuts. Hardware shall be either yellow zinc dichromate in accordance with ASTM B633 SC2 or AISI Type 304 Stainless Steel.
- F.** Wire basket system supports shall be either center support hangers, trapeze hangers or wall brackets as manufactured by B-Line Systems, Inc. (or engineer approved equal).
- G.** Trapeze hangers or center support hangers shall be supported by either 1/4" or 3/8" diameter rods.
- H.** Special accessories shall be furnished as required to protect, support and install a wire basket runway system.

PART 3 - EXECUTION

3.01 INSTALLATION

- A.** Install wire basket cable support systems as indicated; in accordance with recognized industry practices, to ensure that the cable tray equipment complies with requirements of NEC, and applicable portions of NFPA 70B and NECA's "Standards of Installation" pertaining to general electrical installation practices.
- B.** Coordinate wire basket systems with other electrical work as necessary to properly interface installation of wire basket runway with other work.
- C.** Provide sufficient space encompassing wire basket systems to permit access for installing and maintaining cables.

3.02 TESTING

- A.** Test wire basket systems to ensure electrical continuity of bonding and grounding connections, and to demonstrate compliance with specified maximum grounding resistance. See NFPA 70B, Chapter 18, for testing and test methods.
- B.** Manufacturer shall provide test reports witnessed by an independent testing laboratory of the "worst case" loading conditions outlined in this specification and performed in accordance with the latest revision of NEMA VE-1.

CABLING SUPPORT OPTIONS

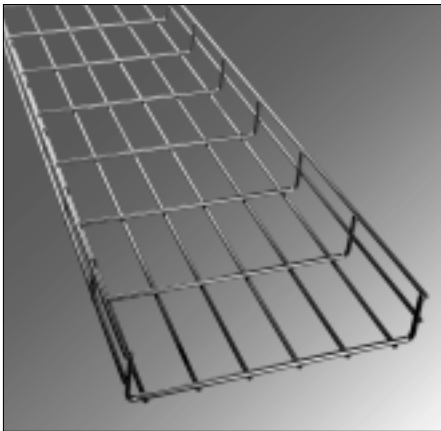


CABLE HOOK SYSTEM

B-Line's cable hook system is a user friendly, cost effective means to support communications cabling. The cable hooks are designed to maximize cable-bearing surface, eliminate stress and optimize cable performance. Cable hooks are available in three convenient sizes: 1⁵/₁₆", 2", and 4", and will accommodate most support applications. B-Line catalog BLF-02.

CABLE RUNWAY

Traditional telecom cabling support system offered in solid bar, tubular, or the new C-Channel design. No side rail design allows system to be installed in limited spaces without fittings. B-Line catalog BLT-01.



WIRE BASKET CABLE SUPPORT SYSTEMS

B-Line's wire basket cable support system is a low profile, rugged wire mesh design, which provides an economical cable support system that is field adaptable. The unique field control eliminates the need to special order clumsy fittings. B-Line catalog WB-02.

CENT-R-RAIL® SYSTEMS

Four separate systems created to match installation needs. The best systems for cable to freely enter and exit the system. Strong, NEMA 12C, aluminum construction. System assembles with couplings and connectors and is UL Classified. The fastest system to install. B-Line catalog CR-02.



CABLE TRAY SYSTEMS

B-Line's traditional two side rail cable tray. Rugged two side rail construction protects cables and allows for a wide range of sizes and strengths. Coupled with a large selection of materials, finishes, and bottom types, these engineered systems can satisfy your particular requirements. B-Line catalogs Metallic CT-01 and Nonmetallic CT01FRP.



REDI-RAIL™ SYSTEMS

This new high tech design offers new freedom to the installer. The mechanically assembled, pre-punched side rail design provides unmatched job sight adaptability for a two side rail system. Loading depths from 2" to 6", aluminum construction. B-Line catalog RR-01.

CHANNEL CABLE TRAY

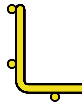
B-Line's channel cable tray is a compact, adaptable, easy to install system that is available in steel, aluminum, and fiberglass. System has fittings available as well as connectors and a full line of accessories. B-Line catalogs Metallic CT-01 and Nonmetallic CT01FRP.



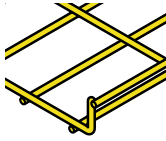
WIREWAY

B-Line offers commercial and industrial wireway and wiring trough to handle almost any of your wire and cable routing needs. Commercial Type 1 and 3R designs are available with or without knockouts. Sizes range from 2.5" x 2.5" to 12" x 12" and lengths from 12" to 120". Industrial NEMA 12 designs are available in both lay-in and feed-through styles. Wireway is available in ANSI 61 gray painted steel and Type 304 stainless steel. B-Line can also provide special sizes, finishes, and other modifications. B-Line catalog ENC-02.

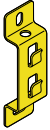
THE B-LINE ADVANTAGE



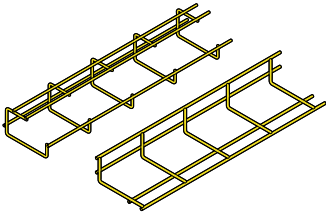
- Patented rung wire design - cable and installer safe.



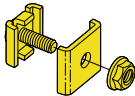
- ASTM B633, YZN, SC2, 171 hours in salt spray test compared to the industry, SCI, clear, at 62 hours.



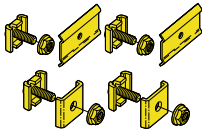
- Snap Hanger - 2 wire contact security plus trapeze or wall mount applications.



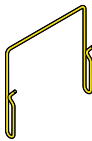
- WB504 and WB604 designs - additional products to satisfy customer needs.



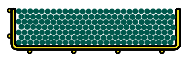
- WB4CA - with studded plate, this is a three piece connector assembly - decreases items to handle by 25% - translates into labor savings.



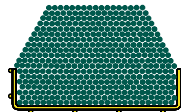
- Poly-bagged splicing kits - Time savers for the inventory handlers and the installers - UL classified splice method.



- Rail Risers - New to the world concept - expand the loading depth of installed systems.



Capacity



Tested Capacity

- CSA witnessed tested - tested to NEMA VE-1-1998 and CSA C22.2 No. 126.1-98 loading chart page 30.



- Industry involvement - NEMA 5CT cable tray section, CTI, Cable Tray Institute, founding member, and active in the codes and building standards development.

"Help make the rules - Know the rules - Follow the rules"

- Wire Basket Sample Kit part number WB208SK2.

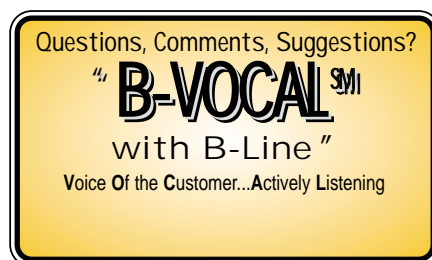
INDEX

Part Number	Page	Part Number	Page	Part Number	Page
A		S		W	
ADI-25	.28	SB2204	.19	WB2GC	.24
ARC-1-RH25	.28	SB301-1/2 x 8	.27	WB2MP	.24
ARS-1-RH25	.28	SB420ACW	.25	WB2PC	.21
ARW-1-RH25	.28	SB420AFB	.25	WB2RR	.22
ATR 1/4	.26	SB420ATG	.25	WB2RSPL	.22
ATR 3/8	.26	SB420AYZN	.25	WB30BC	.13
AWA-25-225	.28	SC228	.37	WB30RB	.13
		SRHMS 1/4 x 1	.27	WB312-18UF	.20
		SRHMS 3/8 x 1	.27	WB408	.6
B				WB41SK	.11
B212-1/4	.25	W		WB412	.6
B24	.26	WB(*)08BE	.24	WB412-18UF	.20
B24SH	.26	WB(*)12BE	.24	WB418	.6
B409UF-12	.21	WB(*)18BE	.24	WB42SK	.11
B409UF-18	.21	WB(*)24BE	.24	WB424	.6
B409UF-24	.21	WB050CC	.23	WB43SB	.9
B501-1	.21	WB06DO	.22	WB43SK	.11
B501-11/2	.21	WB075CC	.23	WB44SK	.11
B501-2	.21	WB08DO	.22	WB45SK	.11
B501-21/2	.21	WB10SB	.9	WB48WMK	.18
B54	.26	WB100CC	.23	WB4B-3M	.23
B54SH	.26	WB104	.7	WB4CA	.8
B655-1/4	.27	WB112	.7	WB4CP	.8
B655-3/8	.27	WB12DO	.22	WB4HAK	.9, 37
B719EB	.24	WB125CC	.23	WB4HD	.14
		WB1224WMK	.18	WB4PL	.8
		WB138FPSK	.20	WB4RSPL	.22
F		WB150CC	.23	WB4SC	.19
FN224	.26	WB200CC	.23	WB4SH	.14
FN228	.26	WB200FPSK	.20	WB4SP	.9
FW 1/4	.27	WB202	.6	WB4WB	.14
FW 3/8	.27	WB202BE	.24	WB504	.7
		WB204	.6	WB506CB	.16
H		WB204BE	.24	WB506SB	.17
HN 1/4	.27	WB206	.6	WB508CB	.16
HN 3/8	.27	WB206BE	.24	WB508SB	.17
		WB208	.6	WB510CB	.16
N		WB212	.6	WB510SB	.17
N224WO	.26	WB218	.6	WB5108	.16
N228WO	.26	WB224	.6	WB5112	.16
		WB2B-3M	.23	WB5118	.16
		WB2DO	.22	WB512-18UF	.20
		WB2FS	.20	WB5124	.16
				WB514CB	.16

Part Number	Page	Part Number	Page	Part Number	Page
-------------	------	-------------	------	-------------	------

W

WB514SB17
 WB530815
 WB531215
 WB531815
 WB532415
 WB550615
 WB550815
 WB551215
 WB551815
 WB552415
 WB6047
 WB612-18UF20
 WB6CH14
 WBM6CASS48
 WBP20025923
 WBP20045923
 WBP20065923
 WBP20085923
 WBP20125923
 WBP20185923
 WBP20245923
 WBSP17
 WB-TLC12
 WBWTK18
 9ZN-5212WB15



Ask The Experts!

Cooper B-Line