

DSView[®] 3 Management Software

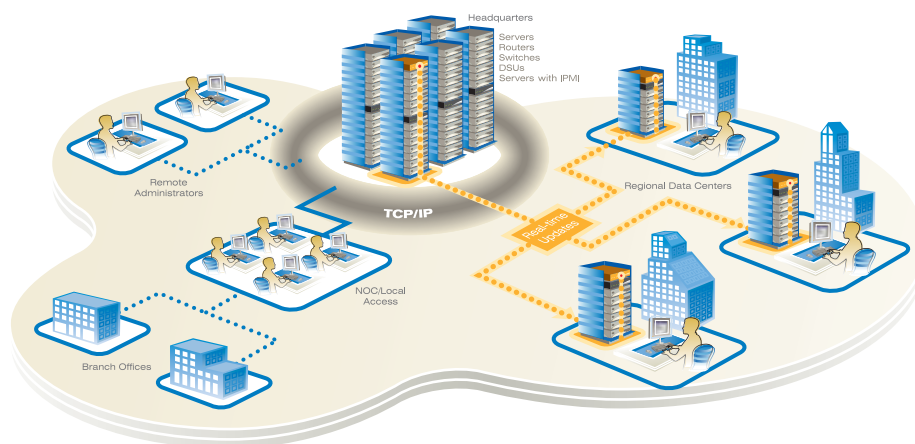


Secure, Centralized Data Center Management

DSView[®] 3 management software by Avocent enables secure, centralized management of all connected IT and network devices in today's often complex and geographically dispersed data centers. When used in conjunction with any DS Series, MergePoint[™] or Cyclades[®]-branded products, DSView 3 software allows IT administrators to remotely access, monitor and control target devices on multiple platforms at numerous locations – anywhere, anytime.

A unique feature of DSView 3 software is its “hub and spoke” architecture, which provides the industry's most complete backup/failover solution with its fully redundant, replicating database. This feature allows for the automation of routine tasks, event alerts and easy navigation between multiple IT devices to configure, manage, upgrade and backup any IT device – all from a single, Web-based user interface.

DSView 3 software offers other market-leading features. Its virtual media functionality enables IT administrators to remotely transfer local data to and from remote servers to perform a variety of tasks across heterogeneous platforms regardless of the operating system. IT administrators can install or patch applications, perform diagnostic testing and even reboot remote servers – all from their desktops – eliminating costly and time-intensive site visits. Additional key features include selectable encryption modes, multiple authentication support, exit macros, detailed event log management for security and auditing, and third party power support.



Applications

- Secure, centralized data center management
- Intelligent Platform Management Interface (IPMI) management
- Data logging/archiving for regulatory and audit compliance
- Audited change management
- Automated infrastructure management with SSH pass-through feature

Benefits

- Hub and spoke architecture for redundancy and real-time updates
- Consolidated user interface for centralized management
- Support for embedded server management technologies from multiple server manufacturers
- IPMI-enabled server access
- Exit macros for secure user access
- User authentication through internal or external services such as LDAP, Active Directory, NT Domain, TACACS+, RADIUS and RSA SecurID

Specifications

DSView 3 server

Microsoft® Windows® 2000 Server or Windows 2000 Advanced Server with the latest service package
Microsoft Windows Server® 2003 Standard, Enterprise and Web Edition
Microsoft Windows XP Professional with Service Pack 2, or later, Windows Vista™
Red Hat Enterprise Linux, version 3 or 4 (AS, ES and WS products)
Sun® Solaris™ SPARC 9 and 10
Novell® SUSE™ Linux (x86) Enterprise Server 8 and 9
VMware Virtual Server

DSView 3 software (hub/spoke) minimum requirements

For supported Windows and Linux systems: 2 GHz Pentium or equivalent processor
For supported Solaris systems: 1 GHz UltraSpare III processor
1 GB RAM – additional memory may be needed depending on the number of plug-ins installed and appliances supported
100BT NIC (1 GB LAN recommended)
10 GB of free disk space – additional disk space may be required for data logging and plug-ins

One of the following operating systems:

- Microsoft Windows 2000 Server or Windows 2000 Advanced Server with the latest service pack
- Microsoft Windows Server 2003 Standard, Enterprise and Web Edition
- Windows XP Professional with Service Pack 2 or later
- Windows 2003 Server Standard, Enterprise or Web Edition
- Windows Vista
- Red Hat Enterprise Linux, version 3 or 4 (AS, ES and WS products)
- Sun® Solaris™ SPARC 9 and 10
- Novell® SUSE™ Linux (x86) Enterprise Server 8 and 9

Browser support

Microsoft Internet Explorer version 6.0 SP1 and later (Windows operating systems only)
Mozilla version 1.7.3 and later
Mozilla Firefox version 1.0 and later (Windows and Mac)
Netscape version 7.2. and later

Avocent managed appliance support

Console management appliances

CPS810 and 1610 serial over IP network appliances
All CCM console management appliances
Cyclades ACS advanced console server

Digital switches

DS1800 digital switches
DSR® switch models: 800, 1010, 1020,* 1021,* 1022,* 1024,* 1030,* 1031,* 1161, 2010, 2020,* 2030,* 2035,* 2161, 4010, 4020,* 4030,* 4160, 8020,* 8030,* 8055*
**These models contain a modem port for use with the DSR switch remote operations software.*
Cyclades KVM/net KVM over IP switch
Cyclades KVM/netPlus KVM over IP switch

Service processor managers

MergePoint 5200 series of service processor managers

Generic appliances

Data center devices such as UPS, HVAC and environmental monitoring devices may be managed with DSView 3 software by launching a standard Web browser to the device URL or opening a Telnet session.

Supported modems

The following modems and serial PCI cards are supported by the DSView 3 software, provided the modems are supported on the DSView 3 server operating system.

- Perle PCI-RAS 4 and PCI-RAS 8, which are backwards compatible with Perle V90 Modem
 - Equinox SST MM 4p Modem
 - Equinox SST 4p Serial
- DSView 3 software also supports the USR3453B - Courier 56k external modem.

Power devices

Power devices are supported on CPS and CCM appliances and on all DSR switches that contain one or more SPC ports.

- Avocent SPC power control devices
- Server Technologies Sentry Switched CDU CW-8H1, CW-8H2, CW-16V1, CW-16V2, CW-24V2, CW-24V3, CW-32VD1 AND CW-32VD2 (supported models may change; contact Avocent Technical Support for current information)*
- Cyclades PM8i-10A, Cyclades PM10-15A, Cyclades PM10-20A, Cyclades PM10-L20A, Cyclades PM10-L50A, Cyclades PM10i-10A, Cyclades PM10i-15A, Cyclades PM10i-16A, Cyclades PM10i-20A, Cyclades PM10i-L50A, Cyclades PM10i-32A, Cyclades PM10i-32Au, Cyclades PM20-20A, Cyclades PM20-L20A, Cyclades PM20-L50A, Cyclades PM20i-16A, Cyclades PM20i-20A, Cyclades PM20i-30A, Cyclades PM20i-30Au, Cyclades PM20i-L50A, Cyclades PM20i-32A, Cyclades PM20i-32Au

*CPS appliances do not support.

Features

Data Center Management

- Support for embedded server management technologies (HP iLO, Dell DRAC 4, IBM RSA II, NEC IPF), IPMI, MergePoint appliances and Cyclades-branded appliances
- Multiplatform support for centralized management
- Detailed audit logs and reporting
- E-mail event notification and SNMP traps for defined system events
- Scheduling of routine tasks, updates and file loading, including automation of task schedules and updates
- Single Flash upgrade
- Single appliance browser

Security

- Failover authentication
- Redundancy for user access and authentication provided by hub and spoke architecture
- Virtual media
- Selectable encryption modes
- Authentication against existing authentication services (LDAP, Active Directory, NT Domain, RADIUS, TACACS+ and RSA SecurID)
- User logs and access control
- Log event management
- Video encryption
- Exit macros

User Interface

- Single, secure browser-based interface with customized usability features, including keyboard pass through, scaling, custom viewer toolbar and built-in search filter
- Multibrowser support (Internet Explorer, Firefox, Netscape and Mozilla)
- Virtual media support for remote diagnostic testing and software loading
- Scalable video sessions

Part Number	Model	Description
DSV3-1	DSView 3 software	1 user add-on license
DSV3-5	DSView 3 software	5 user add-on license
DSV3-10	DSView 3 software	10 user add-on license
DSV3-25	DSView 3 software	25 user add-on license
DSV3-50	DSView 3 software	50 user add-on license
DSV3-SPOKE	DSView 3 software	1 spoke add-on license
DSV3-DEMO90	DSView 3 software	Demo license key
DSV3-SW	DSView 3 software - portfolio B	1 hub/1 spoke/5 users
DSV3-SWA	DSView 3 software - portfolio A	1 hub/5 users
DSV3-PWR1	DSView 3 software power management option license	1 device
DSV3-PWR5	DSView 3 software power management option license	5 devices
DSV3-PWR10	DSView 3 software power management option license	10 devices
DSV3-PWR25	DSView 3 software power management option license	25 devices
DSV3-DLS8	DSV3 Data Logger License fee	8 concurrent user connections
DSV3-DLS32	DSV3 Data Logger License fee	32 concurrent user connections
DSV3-DLS64	DSV3 Data Logger License fee	64 concurrent user connections
DSV3-DLS128	DSV3 Data Logger License fee	128 concurrent user connections
DSV3-DLS256	DSV3 Data Logger License fee	256 concurrent user connections

Avocent, the Avocent logo, The Power of Being There, Cyclades, DSR, DSView and MergePoint are trademarks or registered trademarks of Avocent Corporation or its affiliates. All other marks are the property of their respective owners.

Copyright © 2007. Avocent Corporation. All rights reserved.

0307-DSV-DS