



17" LCD with IP Over the NET & 16-Port KVM Switch KL9116M

The KL9116M is an IP-based KVM control unit that allows both local and remote operators to monitor and access multiple computers from multiple consoles. A single KL9116M can control up to 16 computers and can be accessed from any computer on the Net. The KL9116M features independently retractable 17" LCD monitor and keyboard with built-in touchpad. To maximize space in your data center the keyboard "hides away" when not in use, while the thin profile LCD monitor provides continuous monitoring of computers.

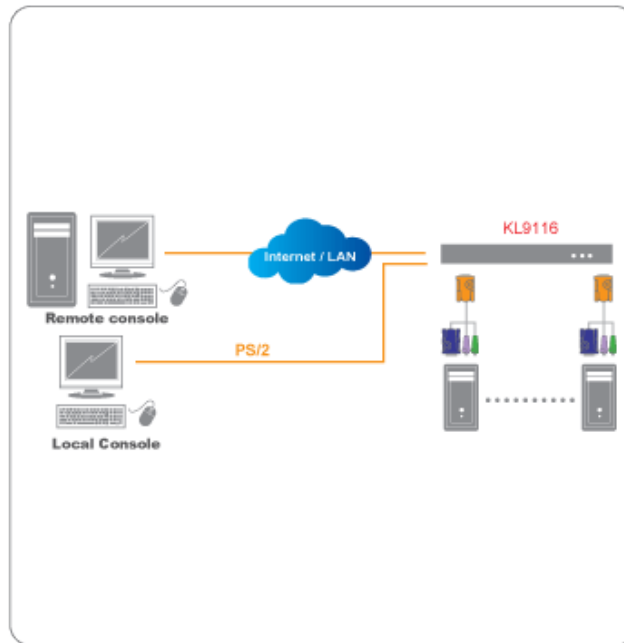
Distributor Part NO. :

Features:

- Integrated KVM console with 17" LCD monitor - in a Hideaway™ housing
- Space saving technology with dual bus function support – 1 remote console (one bus) and two local consoles (one bus) control up to 16 computers
- Remotely access computers via the LAN, WAN, or Internet - control your installation when and where you want
- Dual-bus: one local and one remote user can simultaneously control separate ports
- Extra console port—manage computers in the LCD KVM switch from an external console (monitor, PS/2 keyboard, and PS/2 mouse)
- Supports external PS/2 mouse
- Supports dedicated OSD and OSD Toolbar invocation keys
- Dual slide—LCD Monitor component can slide independently of the keyboard/touchpad component
- Console lock - enables the console drawer to remain securely locked away in position when not in use
- Internet browser access, Windows Client and Java Client provided, Java Client works with all operating systems
- Graphical OSD and graphical toolbars for convenient, user-friendly operation
- Up to 64 user accounts - up to 32 concurrent remote logins
- Panel Array Mode - view all 16 ports at the same time
- Message board feature allows logged in users to communicate with each other and allows a remote user to take exclusive control of the KVM functions
- Windows-based Log Server
- Remote power control for attached Power over the Net™ devices
- Three level login security: Administrator, User, and Select
- Advanced security features include password protection and advanced encryption technologies - 1024 bit RSA, 256 bit AES, 56 bit DES, and 128 bit SSL
- RADIUS server support
- Flash firmware upgradable over network connection

- Ports can be set to Exclusive, Occupy and Share
- Network Interfaces: TCP/IP, HTTP, HTTPS, UDP, RADIUS, DHCP, SSL, ARP, DNS, 10Base-T/100Base-TX, auto sense, Ping.
- High video resolution: up to 1280x 1024@ 75Hz (17" LCD); 1600 x1200@ 60Hz (Remote)

Diagram :



Requirements:

For Remote Computers:

- For best results, computers that remotely access the KL9116M should have at least PIII GHz processor, with screen resolution set to 1024x748
- For the Windows Client, you must have DirectX 7.0 or higher installed
- For Java Client, you must have Sun's Java 2 (1.4 or higher) runtime environments installed
- Browsers must be 128-bit encryption enabled

For computer Requirements:

- The following equipment must be installed on the computers that connect to the KL9116M's CPU ports:
- A VGA, SVGA or Multi-sync port
- A 6-pin mini-DIN (PS/2) keyboard port
- A 6-pin mini-DIN (PS/2) mouse port
- Cables: 2L5202P (6 ft), additional sizes also available

Package Content:

- 1 x KL9116M Hideaway™ 17" LCD KVM Switch with Standard Rack Mounting Kit

- 2 x Custom PS/2 KVM Cable Set
- 1 x upgrade Long Rack Mounting Kit
- 1 x Power Cord
- 1 x User Manual
- 1 x Quick Start Guide
- 1 x Registration Card

Specification :

* Master Carton	
Width	26.4 in. (67 cm)
Height	5.6 in. (14 cm)
* Master Carton Qty.	1
Depth	32.6 in. (82.7 cm)
Power Input Rating	
Per AC Power Inlet, 50/60Hz	100~ 240V AC, 1A
Switches	
Reset	1 x Semi-recessed Pushbutton
Power	1 x Rocker
Connectors	
Power	1 x 3 Prong AC Socket
PON	1 x DB-9 male (Black)
Mouse	External Mouse: 1 x 6-pin Mini-DIN Female (Green)
LAN	1 X RJ-45 Female (Black)
*** Unit Package Dimensions	
Width	5.6 in (14 cm)
Depth	26.4 in (67 cm)
Height	32.6 in (82.7 cm)
Computer Connections	
Daisy Chain or Cascading	128 (via Cascade)
Direct	16
Emulation	
Mouse	PS/2
Keyboard	PS/2
LEDs	
10/100 Mbps	1 (Orange/Green)
Selected	16 (Orange)
Station ID	2 digits 7 segment orange at keyboard pad module
Link	1 (Green)
On Line	16 (green)
Power On	1 x blue at front panel
Console Connectors	
Monitor	1 xHDB-15 Female (Blue)
Mouse	1 x 6- pin Mini-DIN Female (Green)

Keyboard	1 x 6-pin Mini-DIN Female (Purple)
Housing	
Case	Metal
Weight	
Unit Pack Wt.	38.2 lb. (17.3 kg)
Master Carton Wt.	52.8 lb. (24.0 kg)
**** Unit Dimensions	
Height	1.7 in. (4.4 cm.), 1U
Width	19 in. (48.2 cm.)
Depth	28.0 in. (71 cm.)
CPU Connectors	
Keyboard, Mouse, and Monitor	16 x SPHD-15 Female (Yellow)
Scan Interval	1~255 Sec
Console Connection	1 Local, 1 Remote
Humidity	0 - 80% RH
Video Resolution	17"-1280x1024; DDC2B/ Remote-1600x1200@ 60Hz; DDC2B
Power Consumption	120V/31 W; 230V/39W
Operating Temperature	32F~104F (0C~40C)
Port Selection	OSD, Hotkey, Push Buttom
Storage Temperature	-4F~140F (-20C ~ +60C)
Ports	Selection : 2 x Pushbutton