



17" LCD with IP Over the NET & 8-Port KVM Switch KL9108M

The KL9108M is an IP-based KVM control unit that allows both local and remote operators to monitor and access multiple computers from multiple consoles. A single KL9108M can control up to 8 computers and can be accessed from any computer on the Internet. The KL9108M features independently retractable 17" LCD monitor and keyboard with built-in touchpad. To maximize space in your data center the keyboard "hides away" when not in use, while the thin profile LCD monitor provides continuous monitoring of computers.

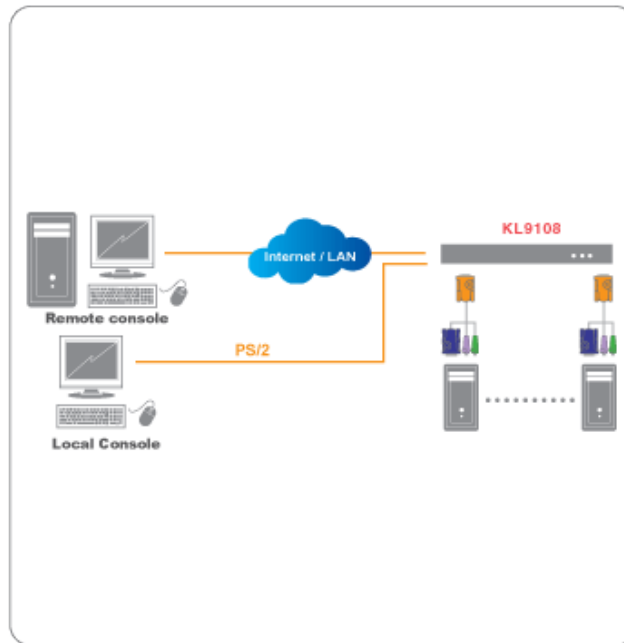
Distributor Part NO. :

| Features:

- Integrated KVM console with 17" LCD monitor - in a Hideaway™ housing
- Space saving technology with dual bus function support – 1 remote console (one bus) and two local consoles (one bus) control up to 8 computers
- Remotely access computers via the LAN, WAN, or Internet - control your installation when and where you want
- Dual-bus: one local and one remote user can simultaneously control separate ports
- Extra console port—manage computers in the LCD KVM switch from an external console (monitor, PS/2 keyboard, and PS/2 mouse)
- Supports external PS/2 mouse
- Supports dedicated OSD and OSD Toolbar invocation keys
- Dual slide—LCD Monitor component can slide independently of the keyboard/touchpad component
- Console lock - enables the console drawer to remain securely locked away in position when not in use
- Internet browser access, Windows Client and Java Client provided, Java Client works with all operating systems
- Graphical OSD and graphical toolbars for convenient, user-friendly operation
- Up to 64 user accounts - up to 32 concurrent remote logins
- Panel Array Mode - view all 8 ports at the same time
- Message board feature allows logged in users to communicate with each other and allows a remote user to take exclusive control of the KVM functions
- Windows-based Log Server
- Remote power control for attached Power over the Net™ devices
- Three level login security: Administrator, User, and Select
- Advanced security features include password protection and advanced encryption technologies - 1024 bit RSA, 256 bit AES, 56 bit DES, and 128 bit SSL
- RADIUS server support
- Flash firmware upgradable over network connection

- Ports can be set to Exclusive, Occupy and Share
- Network Interfaces: TCP/IP, HTTP, HTTPS, UDP, RADIUS, DHCP, SSL, ARP, DNS, 10Base-T/100Base-TX, auto sense, Ping.
- High video resolution: up to 1280x 1024@ 75Hz (17" LCD); 1600 x1200@ 60Hz (Remote)

Diagram :



Requirements:

For Remote Computers:

- For best results, computers that remotely access the KL9108M should have at least PIII GHz processor, with screen resolution set to 1024x748
- For the Windows Client, you must have DirectX 7.0 or higher installed
- For Java Client, you must have Sun's Java 2 (1.4 or higher) runtime environments installed
- Browsers must be 128-bit encryption enabled

For computer Requirements:

The following equipment must be installed on the computers that connect to the KL9108M's CPU ports:

- A VGA, SVGA or Multi-sync port
- A 6-pin mini-DIN (PS/2) keyboard port
- A 6-pin mini-DIN (PS/2) mouse port
- Cables: 2L5202P (6 ft), additional sizes also available

Package Content:

- 1 x KL9108M Hideaway™ 17" LCD KVM Switch with Standard Rack Mounting Kit
- 2 x Custom PS/2 KVM Cable Set
- 1 x upgrade Long Rack Mounting Kit
- 1 x Power Cord

- 1 x User Manual
- 1 x Quick Start Guide
- 1 x Registration Card

I Specification :

| | |
|-----------------------------|---|
| * Master Carton | |
| Width | 26.4 in. (67 cm) |
| Height | 5.6 in. (14 cm) |
| * Master Carton Qty. | 1 |
| Depth | 32.6 in. (82.7 cm) |
| Power Input Rating | |
| Per AC Power Inlet, 50/60Hz | 100~ 240V AC, 1A |
| Switches | |
| Reset | 1 x Semi-recessed Pushbutton |
| Power | 1 x Rocker |
| Connectors | |
| Power | 1 x 3 Prong AC Socket |
| PON | 1 x DB-9 male (Black) |
| Mouse | External Mouse: 1 x 6-pin Mini-DIN Female (Green) |
| LAN | 1 X RJ-45 Female (Black) |
| *** Unit Package Dimensions | |
| Width | 5.6 in (14 cm) |
| Depth | 26.4 in (67 cm) |
| Height | 32.6 in (82.7 cm) |
| Computer Connections | |
| Daisy Chain or Cascading | 64 (via Cascade) |
| Direct | 8 |
| Emulation | |
| Mouse | PS/2 |
| Keyboard | PS/2 |
| LEDs | |
| 10/100 Mbps | 1 (Orange/Green) |
| Selected | 8 (Orange) |
| Station ID | 2 digits 7 segment orange at keyboard pad module |
| Link | 1 (Green) |
| On Line | 8 (green) |
| Power On | 1 x blue at front panel |
| Console Connectors | |
| Monitor | 1 xHDB-15 Female (Blue) |
| Mouse | 1 x 6- pin Mini-DIN Female (Green) |
| Keyboard | 1 x 6-pin Mini-DIN Female (Purple) |
| Housing | |

| | |
|------------------------------|--|
| Case | Metal |
| Weight | |
| Unit Pack Wt. | 38 lb. (17.1 kg) |
| Master Carton Wt. | 52.8 lb. (24.0 kg) |
| **** Unit Dimensions | |
| Height | 1.7 in. (4.4 cm.), 1U |
| Width | 19 in. (48.2 cm.) |
| Depth | 28.0 in. (71 cm.) |
| CPU Connectors | |
| Keyboard, Mouse, and Monitor | 8 x SPHD-15 Female (Yellow) |
| Scan Interval | 1 ~ 255 Sec |
| Console Connection | 1 Local, 1 Remote |
| Humidity | 0 - 80% RH |
| Video Resolution | 17"-1280x1024; DDC2B/ Remote-1600x1200@60Hz; DDC2B |
| Power Consumption | 120V/31 W; 230V/39W |
| Operating Temperature | 32F ~ 104F (0C ~ 40C) |
| Port Selection | OSD, Hotkey, Push Button |
| Storage Temperature | -4F ~ 140F (-20C ~ +60C) |
| Ports | Selection : 2 x Pushbutton |