

Power

Distribution/Monitoring/Environmental



Configuration – Vertical

The 15/20 Amp power strips and 15 Amp power tap listed below are ideal for use in FX Series frames when drawers and/or retractable shelves are used as they incorporate a reduced depth receptacle and encasement. These strips mount behind the slide/side strut and the frame/side panel. Power cord and plug exit strip at front rather than bottom in for the PMA power strips. Power tap has side exit for cord and plug.



Vertical Power Strips — 15 Amp

Strips have reduced thickness to mount between chassis slides and frame.

Part Number	Length	Amps	Volts	Outlets	Plug	Circuit Breaker	UL Designation
PMA36-6-6	36" Vertical	15 Amp	120V	6	5-15P	N	U.L. Recognized
PMA60-10-6	60" Vertical	15 Amp	120V	10	5-15P	N	U.L. Recognized
PMA70-12-6	70" Vertical	15 Amp	120V	12	5-15P	N	U.L. Recognized
PMA72-6-6	48" Vertical	15 Amp	120V	6	5-15P	N	U.L. Recognized
PMA72-12-6	72" Vertical	15 Amp	120V	12	5-15P	N	U.L. Recognized

Configuration – Vertical - Cont'd



Vertical Power Strips — 20 Amp

Strips have reduced thickness to mount between chassis slides and frame.

Part Number	Length	Amps	Volts	Outlets	Plug	Circuit Breaker	UL Designation
PMA20-60-10-6	60" Vertical	20 Amp	120V	10	5-20P	N	U.L. Recognized
PMA20-72-12-6	70" Vertical	20 Amp	120V	12	5-20P	N	U.L. Recognized



Power Tap — 15 Amp

Simple 12", 6 outlet powertap.

Part Number	Length	Amps	Volts	Outlets	Plug	Circuit Breaker	UL Designation
PMTPT12-6-6	12" Vertical	15 Amp	120V	6	5-15P	Y	cU.L. Listed

Configuration – Horizontal

Today's demanding Data Centers require Enclosure manufacturers to supply a variety of Power Distribution solutions to assure minimal downtime and provide optimal value added services and resources. Requirements can be as simple as a 15 Amp/115 Volt power strip with current monitoring or be as complex as a 30 Amp/250 Volt, unit with web access monitoring and remote reboot capabilities. The power selection choices listed on the following pages can be adjusted to meet your current requirements. We can supply almost an unlimited array of power strips as standard or custom configurations which would be mounted in place when you cabinet arrives, saving you considerable time and money. If your requirement is not listed or shown, please do not hesitate to contact IMS/AMCO direct, as we provide standard and custom solutions.



PDU1910-15-125-1510



PDU1910-20-DV-NBNC



PDU1912-20-125-2010

Part Number	Amps	Volts	Outlets	Plug	Circuit Breaker	UL Designation
PDU1910-15-125-1510	15 Amp	125V	10 (NEMA 5-15R Outlets)	5-15P	15 Amp	
PDU1912-20-125-2010	20 Amp	125V	12 (NEMA 5-15R Outlets)	5-20P	20 Amp	
PDU1910-20-DV-NBNC	20 Amp de-rated to 16 Amps	125V or 250V	10 (IEC320 type C-13 Outlets)	No Plug IEC320 C-20 Power Inlet	NO	UL & c-UL Listed Accessory 60950

Configuration – Vertical



PDU1906-15-125-1510



PDU6620-20-250-NB10



PDU6620-15-125-2010D



PDU6620-20-DV-20NCC

Part Number	Amps	Volts	Outlets	Plug	Circuit Breaker	UL Designation
PDU1906-15-125-1510	15 Amp	125V	6 (NEMA 5-15R Outlets)	5-20P	15 Amp	
PDU6620-20-250-NB10	20 Amp de-rated to 16 Amps	250V	20 (Ten duplex NEMA 6-20R)	L6-20P	NO	UL & c-UL Listed 60950
PDU6620-15-125-2010D	20 Amp per Circuit de-rated to 16 Amps	125V	20 (Ten Outlets per Circuit); (Ten duplex NEMA 5-20R)	Two 5-20P	Two 20 Amp	UL & c-UL Listed 60950
PDU6620-20-DV-20NCC	20 Amp de-rated to 16 Amps	125V or 250V	20 (IEC320 type C-13 Outlets)	NO Plug IEC320	Two 20 Amp C-20 Power Inlet	UL & c-UL Listed Accessory 60950

Configuration – Vertical - Cont'd



PDU6624-20-250-NB10



PDU6620-20-125-2010



PDU6620-30-125-1510



PDU6620-30-250-1510

Part Number	Amps	Volts	Outlets	Plug	Circuit Breaker	UL Designation
PDU6624-20-250-NB10	20 Amp de-rated to 16 Amps	250V	24 (IEC320 type C-13 Outlets)	L6-20P	NO	UL & c-UL Listed 60950
PDU6620-20-125-2010	20 Amp	125V	20 (NEMA 5-20R Outlets)	5-20P	20 Amp	
PDU6620-30-125-1510	30 Amp	125V	20 (Ten Outlets per Internal Circuit); (Ten duplex NEMA 5-20R)	L5-30P	Two 15 Amp	UL & c-UL Recognized 1950
PDU6620-30-250-1510	30 Amp de-rated to 24 Amps	250V	20 (Ten Outlets per Internal Circuit); (Ten duplex NEMA 6-20R)	L6-30P	Four 15 Amp	UL & c-UL Listed 1950

The ability to monitor your systems performance from remote locations 24/7/365 anywhere in the world creates a greater sense of comfort for today's IT managers. Power distribution, temperature, humidity, air flow, water sensors and video recording of external access to your system are all features that are now available with IMS power distribution and environmental monitoring systems. Sensors inside the unit and the ability to add and expand via external sensors within the enclosure create a synergistic approach that provides pinpoint assessment of your systems real-time performance. System features a “plug and play solution” so no software is required—systems monitoring visible via web browser. Protected password for administrative and view only access.

IMS/AMCO Master Monitor System

Self-Contained Operation

- Eliminates need to download additional software
- Connects to optional Remote Display (PDD) and Web Camera

Simple Installation

- “Plug & Play” solution; no client software
- Viewable via web browser
- Automatic time set via internet time servers

Ease of Expansion

- External sensors may be added at any time
 - Remote temperature sensor
 - Remote temperature, airflow and humidity sensor
 - Door position sensor
 - Water sensor
 - Web enabled camera
- External sensors are automatically discovered

Conveniently Accessed Diagnostic Data

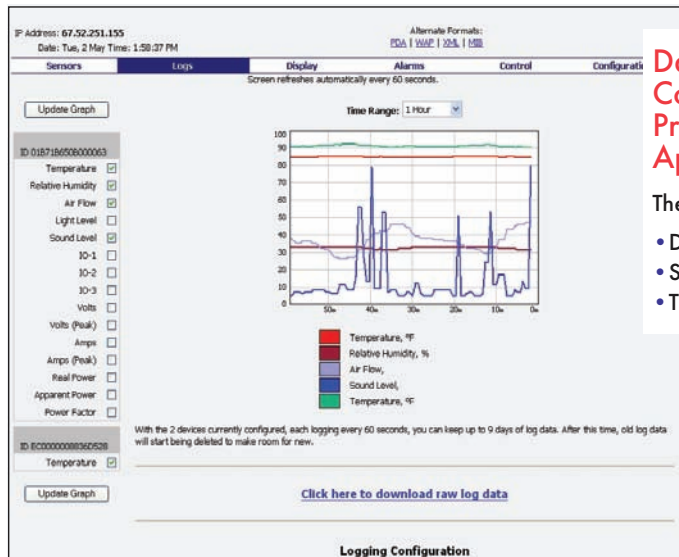
- User defined graphing variables
- Log data available for export to XML
- Log data available real time via SNMP
- PDA and WAP screen formats
- User defined alarm thresholds
- Simultaneous access by multiple users

Timely Monitoring and Alarm Notification

- Audible alarm via display module – PDD
- SNMP traps for alarm and alarm clear
- E-mail notification
- Any combination of the above

Protected Access

- Administrative password
- View only password



Data and Communications Protocols and Applications

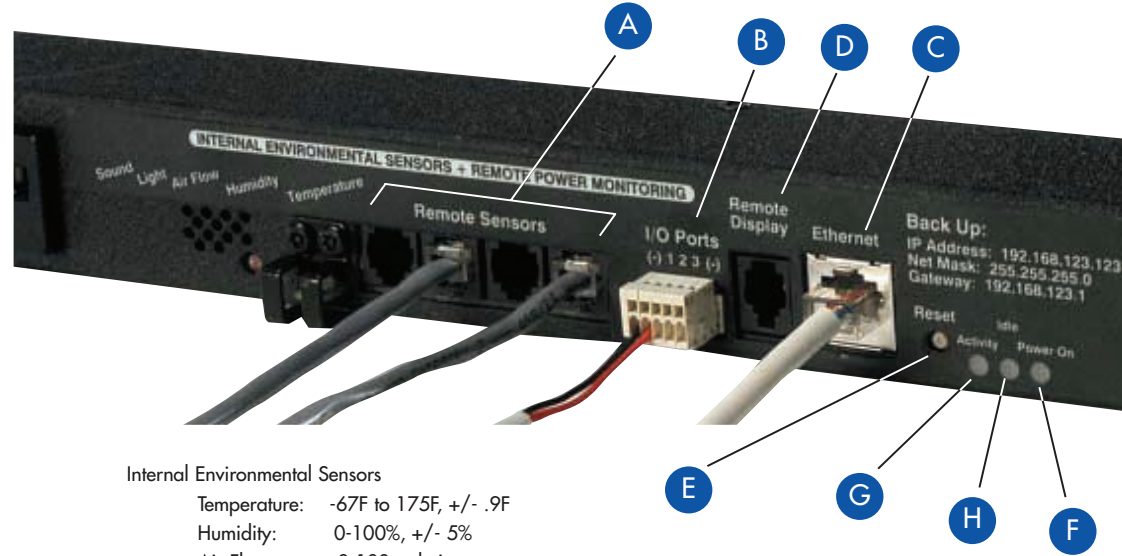
The following are supported:

- DHCP • HTML • HTTP • ICMP
- SNMP • Static IP • SMTP
- TCP/IP • Telnet • UDP • XML

Environmental Monitoring

IMS/AMCO Master PDE

The IMS/AMCO Master PDEs combine **power distribution with power and environmental monitoring** in a stand-alone unit.



Internal Environmental Sensors

- Temperature: -67F to 175F, +/- .9F
- Humidity: 0-100%, +/- 5%
- Air Flow: 0-100, relative
- Sound Level: 0-100, relative
- Light Level: 0-100, relative

Internal Power Sensors

- Volts RMS: 80-280 VAC
- Amps RMS: 0-30 A

External Sensor Connection Ports

- Four RJ11 Jacks – Connect up to 16 Remote Sensors per PDE unit
- Three I/O Ports, 0-5 vdc analog or contact closure

Ethernet Connection Jack

Remote Display Connection Jack

Software Reset Button

Power On Indicator

Activity Indicator

Idle Indicator



Environmental Monitoring

IMS/AMCO PDE Series

- UL & c-UL Listed 60950
- NO circuit breaker
- NO On/Off switch



66" Verticals - 20 Outlets - NEMA

PDE6620-15-125-NB10

- 125 Volts @ 15 Amps, de-rated to 12 Amps
- Twenty each individual receptacles (5-15R)
- 10' power cord with straight blade plug (5-15P)
- Includes one bottom clip and two top clips
- Chassis dimension 66.25"x1.61"x1.61" (LxWxD)



66" Verticals - 20 Outlets - IEC

PDE6620-20-125-NB10

- 125 Volts @ 20 Amps, de-rated to 16 Amp
- Twenty each individual IEC320 receptacles (C-13)
- 10' power cord with straight blade plug (5-20P)
- Includes one bottom clip and two top clip
- Chassis dimension 66.25"x1.61"x1.61" (LxWxD)

PDE6620-20-250-NB10

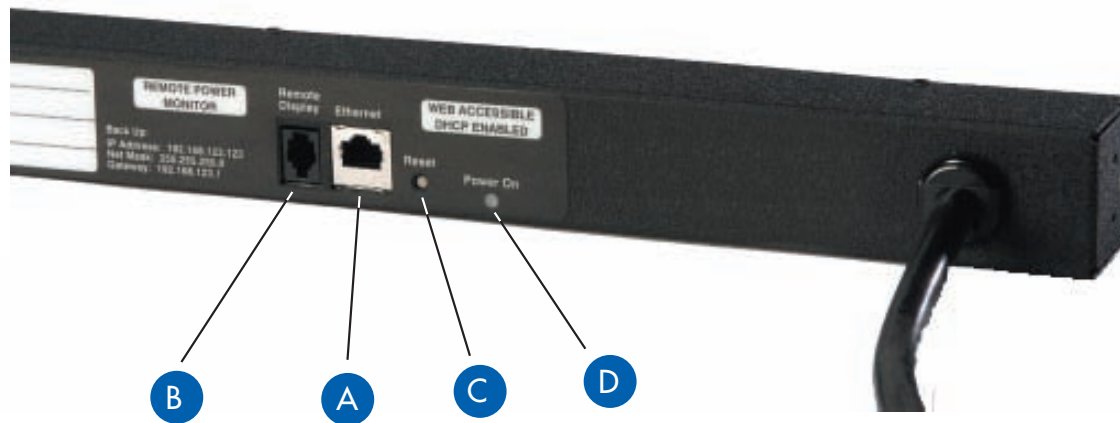
- 250 Volts @ 20 Amps, de-rated to 16 Amps
- Twenty each individual IEC320 receptacles (C-13)
- 10' power cord with straight blade plug (6-20P)
- Includes one bottom clip and two top clips
- Chassis dimension 66.25"x1.61"x1.61" (LxWxD)

Part Number	Amps	Volts	Outlets	Plug Type	Circuit Breaker	UL Designation
PDE6620-15-125-NB10	15 Amp	125V	20 (Ten duplex NEMA 6-20R)	5-15P	15 Amp	UL & c-UL Listed 60950
PDE6620-20-125-NB10	20 Amp	125V	20 (IEC320 type C-13 Outlets)	5-20P	20 Amp	UL & c-UL Listed 60950
PDE6620-20-250-NB10	20 Amp	250V	20 (IEC320 type C-13 Outlets)	6-20P	20 Amp	UL & c-UL Listed 60950

Power Monitoring

IMS/AMCO Power – PDR

PDR Series provides remote power monitoring with user defined limits and alarm notification. The PDD can be added for a local display and audible alarm.



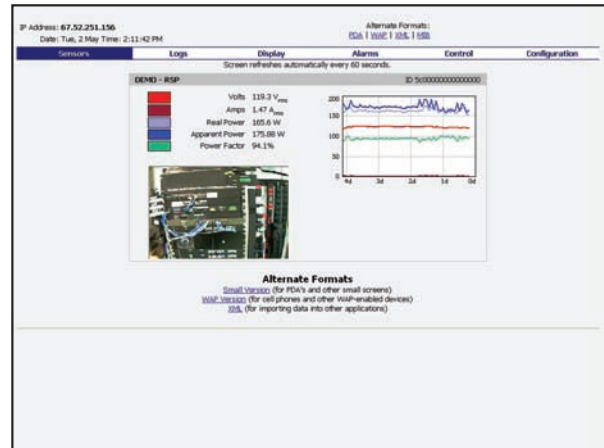
Volts RMS: 80-280 VAC
 Amps RMS: 0-30 A

Ethernet Connection Jack **A**

Remote Display Connection Jack **B**

Software Reset Button **C**

Power On Indicator **D**



Sensors Page

Power Monitoring

IMS/AMCO Power – PDR

- UL & c-UL Listed 60950
- NO circuit breaker
- NO On/Off switch



66" Verticals - 20 Outlets - NEMA

PDR6620-15-125-NB10

- 125 Volts @ 15 Amps, de-rated to 12 Amps
- Twenty each individual receptacles (5-15R)
- 10' power cord with straight blade plug (5-15P)
- Includes one bottom clip and two top clips
- Chassis dimension 66.25"x1.61"x1.61" (LxWxD)



66" Verticals - 20 Outlets - IEC

PDR6620-20-125-NB10

- 125 Volts @ 20 Amps, de-rated to 16 Amp
- Twenty each individual IEC320 receptacles (C-13)
- 10' power cord with straight blade plug (5-20P)
- Includes one bottom clip and two top clip
- Chassis dimension 66.25"x1.61"x1.61" (LxWxD)

PDR6620-20-250-NB10

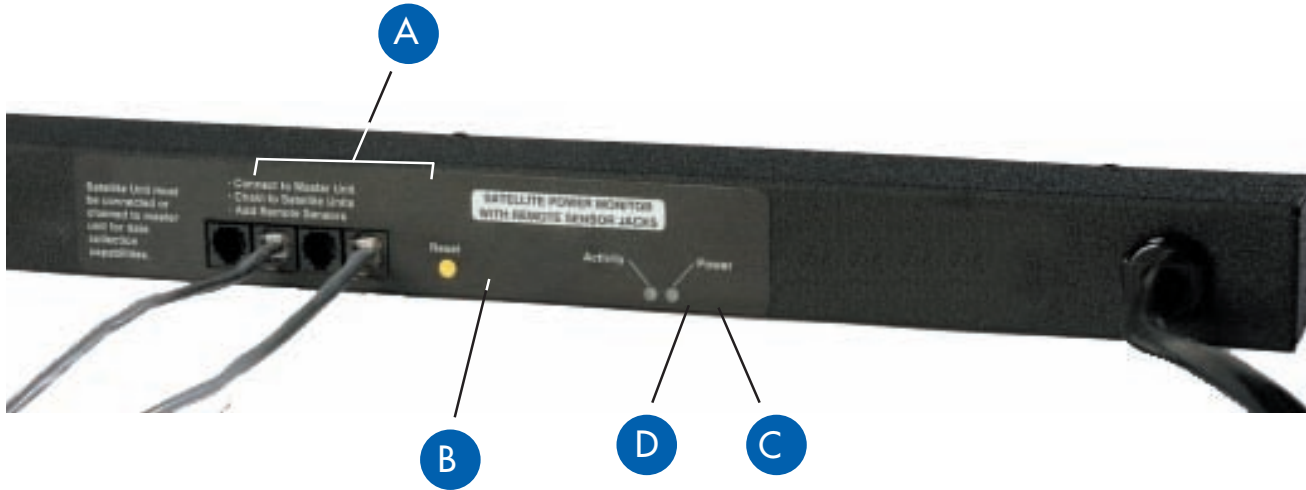
- 250 Volts @ 20 Amps, de-rated to 16 Amps
- Twenty each individual IEC320 receptacles (C-13)
- 10' power cord with straight blade plug (6-20P)
- Includes one bottom clip and two top clips
- Chassis dimension 66.25"x1.61"x1.61" (LxWxD)

Part Number	Amps	Volts	Outlets	Plug Type	Circuit Breaker	UL Designation
PDR6620-15-125-NB10	15 Amp	125V	20 (Ten duplex NEMA 6-20R)	5-15P	15 Amp	UL & c-UL Listed 60950
PDR6620-20-125-NB10	20 Amp	125V	20 (IEC320 type C-13 Outlets)	5-20P	20 Amp	UL & c-UL Listed 6095
PDR6620-20-250-NB10	20 Amp	250V	20 (IEC320 type C-13 Outlets)	6-20P	20 Amp	UL & c-UL Listed 60950

Distribution/Monitoring

IMS/AMCO Sattelite – PDS

The IMS/AMCO Satellite PDSs combine power distribution with monitoring. Satellite units report data as external sensors to RSM and RSE units.



Internal Power Sensors

Volts RMS: 80-280 VAC
 Amps RMS: 0-30 A

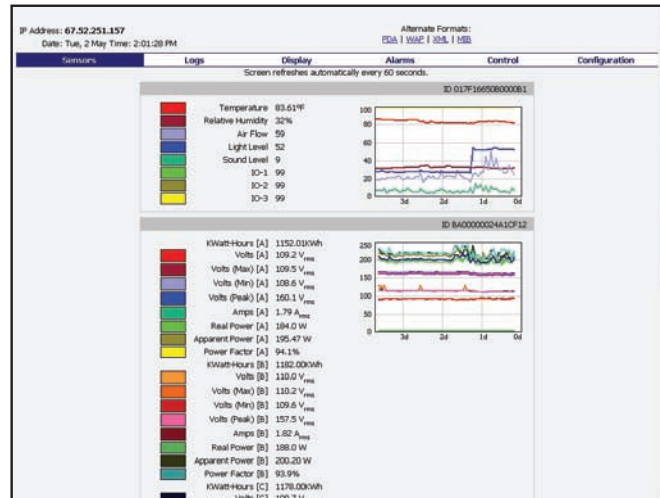
External Sensor Connection Ports A

Four RJ11 Jacks – Used to connect to PDE or EM195, to add more external sensors or to daisy chain to additional PDS units

Software Reset Button B

Power On Indicator C

Activity Indicator D



Distribution/Monitoring

IMS/AMCO Sattelite – PDS

- UL & c-UL Listed 60950
- NO circuit breaker
- NO On/Off switch
- 10' Ribbon Cable included to connect to PDE Master or EM195



66" Verticals - 20 Outlets - NEMA

PDS6620-15-125-NB10

- 125 Volts @ 15 Amps, de-rated to 12 Amps
- Twenty each individual receptacles (5-15R)
- 10' power cord with straight blade plug (5-15P)
- Includes one bottom clip and two top clips
- Chassis dimension 66.25"x1.61"x1.61" (LxWxD)



66" Verticals - 20 Outlets - IEC

PDS6620-20-125-NB10

- 125 Volts @ 20 Amps, de-rated to 16 Amp
- Twenty each individual IEC320 receptacles (C-13)
- 10' power cord with straight blade plug (5-20P)
- Includes one bottom clip and two top clip
- Chassis dimension 66.25"x1.61"x1.61" (LxWxD)

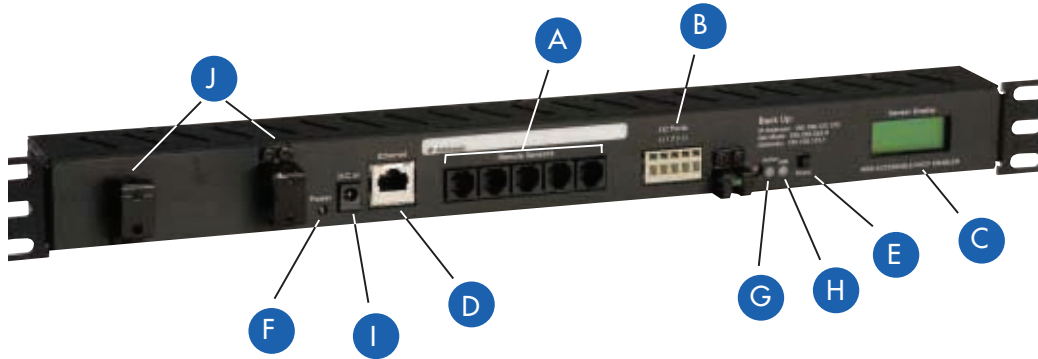
PDS6620-20-250-NB10

- 250 Volts @ 20 Amps, de-rated to 16 Amps
- Twenty each individual IEC320 receptacles (C-13)
- 10' power cord with straight blade plug (6-20P)
- Includes one bottom clip and two top clips
- Chassis dimension 66.25"x1.61"x1.61" (LxWxD)

Part Number	Amps	Volts	Outlets	Plug Type	Circuit Breaker	UL Designation
PDS6620-15-125-NB10	15 Amp	125V	20 (Ten duplex NEMA 6-20R)	5-15P	15 Amp	UL & c-UL Listed 60950
PDS6620-20-125-NB10	20 Amp	125V	20 (IEC320 type C-13 Outlets)	5-20P	20 Amp	UL & c-UL Listed 60950
PDS6620-20-250-NB10	20 Amp	250V	20 (IEC320 type C-13 Outlets)	6-20P	20 Amp	UL & c-UL Listed 60950

Environmental Monitoring

MS/AMCO EM195 Environmental Monitor



- Temperature: -67F to 175F, +/- .9F
- Humidity: 0-100%, +/- 5%
- Air Flow: 0-100, relative
- Sound Level: 0-100, relative
- Light Level: 0-100, relative

External Sensor Connection Ports

- Five RJ11 Jacks – Connect up to 16 Remote Sensors per PDE unit **A**
- Three I/O Ports, 0-5 vdc analog or contact closure **B**

Audible Alarm

LCD Display **C**

Ethernet Connection Jack **D**

Software Reset Button **E**

Power On Indicator **F**

Activity Indicator **G**

Idle Indicator **H**

DC Connection Jack **I**

Cable Management Brackets Attached **J**

Power Supply Included



IMS/AMCO Display Unit – PDD



The PDD is an LCD local display unit that is connected to the PDE series power distribution unit with a plug-in RJ type cord. The display may be mounted at the front or top of a cabinet, eliminating the need to enter a secure cabinet environment. This self-powered display unit will provide a scrolling display of user-selected data gathered by the RSM unit. Upon breach of user-selected thresholds, the PDD will sound a high pitch local alarm that may be silenced by pressing the “reset” button.

Remote Sensors - Optional



- RSMULT-12** Remote Temperature, Airflow and Humidity Sensor (12 foot)
- RSMULT-20** (20 foot) -67F to 175F, +/- .9F, 0-100 - relative
- RSMULT-25** (25 foot) Monitor three environmental conditions in this single cord sensor that can be placed up to 25' from the RSM unit. Ideal for placement near air intake and air exhaust.



- RSTEMP-12** Remote Temperature Sensor (12 foot)
- RSTEMP-20** (20 foot) -67F to 175F, +/- .9F
- RSTEMP-25** (25 foot) Monitor "hot spots" up to 12', 20' or 25' from RSM unit.



- SDP** **Door Position Sensor**
Magnetic Switch
Monitor cabinet door position with this magnetic sensor. Set alarms to alert when a secure cabinet has been opened.



- SWP** **Water Sensor**
0-100, +/--30%
Acts as a conductivity bridge to detect the presence of moisture/water in your facility.



- MCAM** **Web Enabled Camera**
Acquire live video stream via this IP enabled web camera. Small profile allows for discrete placement inside or outside the cabinet.